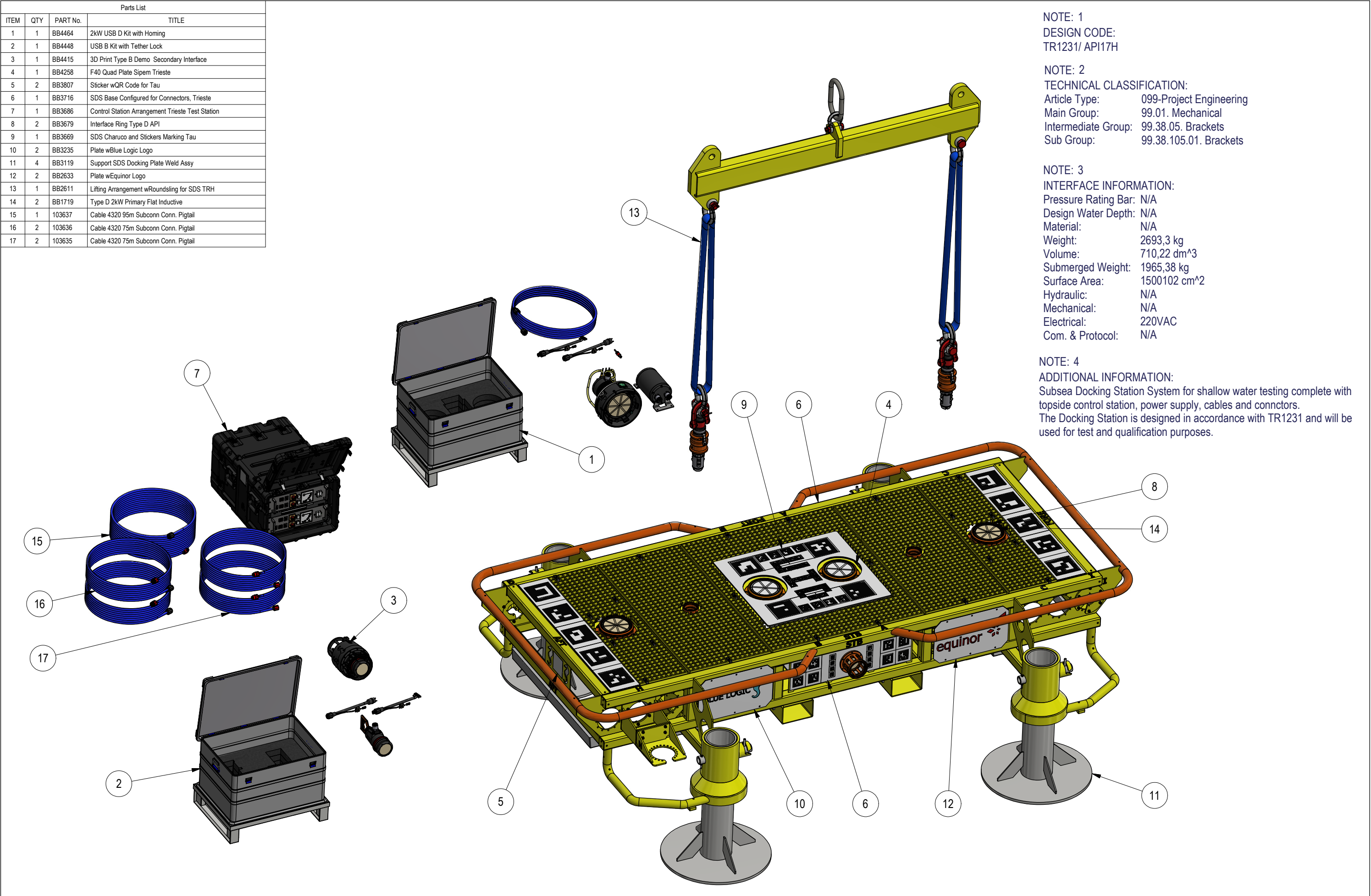


Parts List			
ITEM	QTY	PART No.	TITLE
1	1	BB4464	2kW USB D Kit with Homing
2	1	BB4448	USB B Kit with Tether Lock
3	1	BB4415	3D Print Type B Demo Secondary Interface
4	1	BB4258	F40 Quad Plate Sipem Trieste
5	2	BB3807	Sticker wQR Code for Tau
6	1	BB3716	SDS Base Configured for Connectors, Trieste
7	1	BB3686	Control Station Arrangement Trieste Test Station
8	2	BB3679	Interface Ring Type D API
9	1	BB3669	SDS Charuco and Stickers Marking Tau
10	2	BB3235	Plate wBlue Logic Logo
11	4	BB3119	Support SDS Docking Plate Weld Assy
12	2	BB2633	Plate wEquinor Logo
13	1	BB2611	Lifting Arrangement wRoundsling for SDS TRH
14	2	BB1719	Type D 2kW Primary Flat Inductive
15	1	103637	Cable 4320 95m Subconn Conn. Pigtail
16	2	103636	Cable 4320 75m Subconn Conn. Pigtail
17	2	103635	Cable 4320 75m Subconn Conn. Pigtail



NOTE: 1  
DESIGN CODE:  
TR1231/ API17H

NOTE: 2  
TECHNICAL CLASSIFICATION:  
Article Type: 099-Project Engineering  
Main Group: 99.01. Mechanical  
Intermediate Group: 99.38.05. Brackets  
Sub Group: 99.38.105.01. Brackets

NOTE: 3  
INTERFACE INFORMATION:  
Pressure Rating Bar: N/A  
Design Water Depth: N/A  
Material: N/A  
Weight: 2693,3 kg  
Volume: 710,22 dm^3  
Submerged Weight: 1965,38 kg  
Surface Area: 1500102 cm^2  
Hydraulic: N/A  
Mechanical: N/A  
Electrical: 220VAC  
Com. & Protocol: N/A

NOTE: 4  
ADDITIONAL INFORMATION:  
Subsea Docking Station System for shallow water testing complete with topside control station, power supply, cables and connectors.  
The Docking Station is designed in accordance with TR1231 and will be used for test and qualification purposes.

03	16.6.2020	9-IFU (Issued for Use)		WTJ	EKJ	WTJ	<div>BLUE LOGIC</div>	Dwg Scale:	Drawing title: SDS Mobile Test Arrangement Scope Trieste
02	27.3.2020	9-IFU (Issued for Use)		WTJ	KOS	EKJ		Dwg Proj:	
01	17.9.2019	9-IFU (Issued for Use)		WTJ	KOS	WTJ		Dwg Format: A3	
Rev.	Date	Reason for issue	Revision change	Made	Chk'd	Appr.		Drawing number: BB3821	Rev: 03