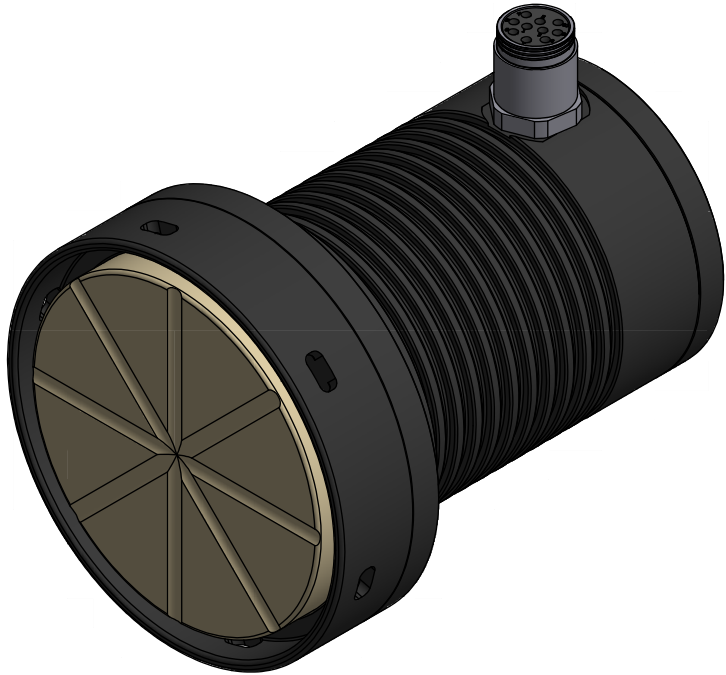
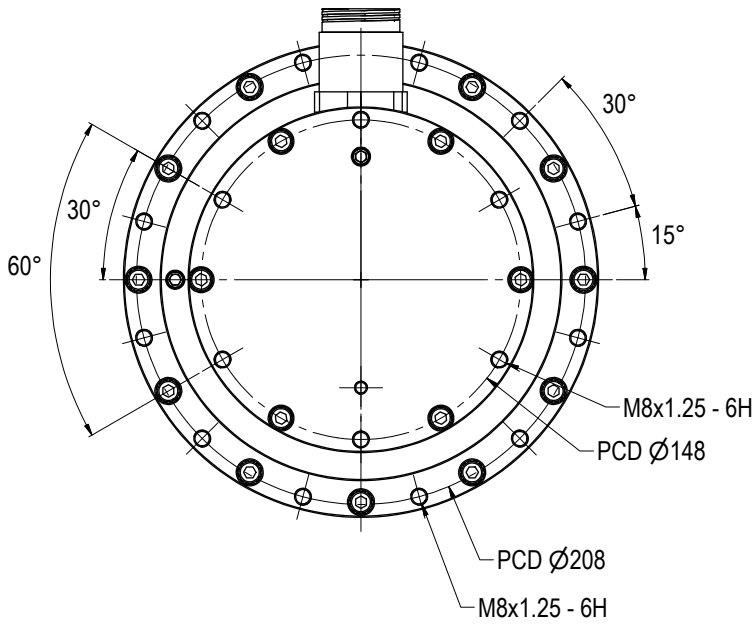
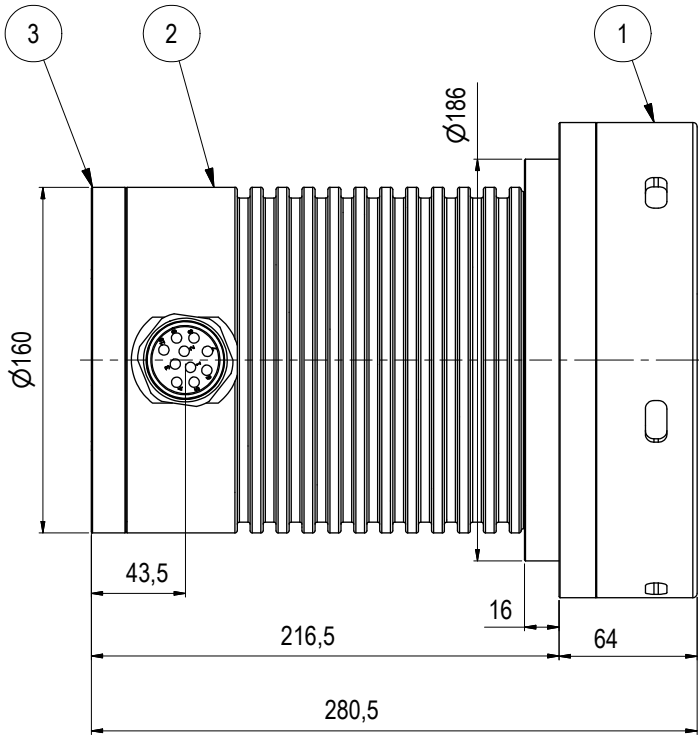
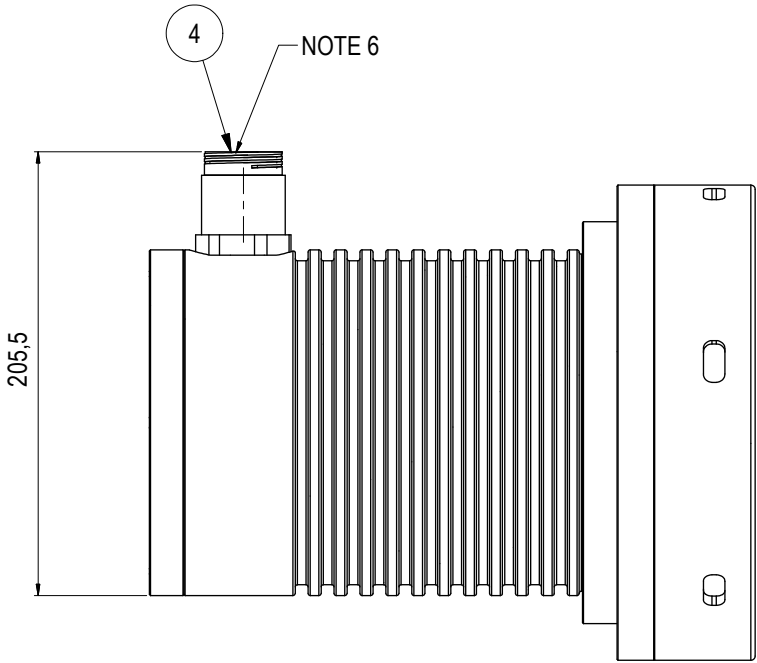
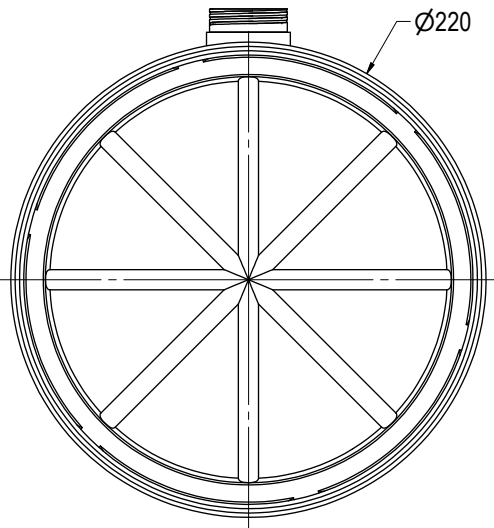


Parts List				
ITEM	QTY	PART No.	DESCRIPTION	MATERIAL
1	1	BB3142	Type D Inductive Element	
2	1	BB1716	Housing	AL 6082 T6
3	1	BB1646	End Lid Female	AL 6082 T6
4	1	100782	Connector Subconn BCR2410F	Stainless Steel



NOTE: 1  
DESIGN CODE:  
N/A

NOTE: 2  
TECHNICAL CLASSIFICATION:  
Article Type: 006-EI. Connectors  
Main Group: 6.01. Subsea USB  
Intermediate Group: 6.28.04. 0,9-3,6KW Subsea USB  
Sub Group: 6.28.157.02. Female Connector

NOTE: 3  
INTERFACE INFORMATION:  
Pressure Rating Bar: 304  
Design Water Depth: 3000m  
Material: Hard Anodized Aluminium  
Weight: 12,4 kg  
Volume: 4,83 dm^3  
Submerged Weight: 7,49 kg  
Surface Area: 12047 cm^2  
Hydraulic: N/A  
Mechanical: Flange Mount  
Electrical: 325 VDC Output, Subconn BCR2410F  
Com. & Protocol: Ethernet & RS232/RS485

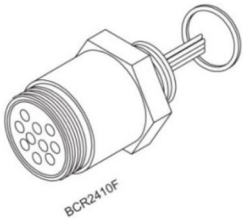
NOTE: 4  
OPERATION & MAINTENANCE INFORMATION:  
600128-TD-0024

NOTE: 5  
ADDITIONAL INFORMATION:  
Design proof pressure - 365Bar.  
Max allowable working pressure - 304Bar  
Communication speed RS232 - Approx. 230 kbps  
Communication speed Ethernet - Approx. 80 Mbps - (half Duplex)  
Operating ambient temperature (0-30°C)  
Storage temperature (-30-55°C for one month continuously)

NOTE 6  
Connector Housing is atmospheric and not compensated

NOTE 7  
Subconn Pin Configuration:

Secondary Side output with RS232	
Connector: Subconn BCR2410F	
Pin #	Signal
Pin 1	325VDC
Pin 2	0 VDC
Pin 3	CHASSIS
Pin 4	RS232RX (input)
Pin 5	RS232TX (output)
Pin 6	RS232GND
Pin 7	TX_p
Pin 8	TX_n
Pin 9	RX_p
Pin 10	RX_n



10	9.1.2024	9-IFU (Issued for Use)		WTJ	LGH	WTJ
09	27.9.2019	9-IFU (Issued for Use)		WTJ	TBA	WTJ
08	31.7.2019	9-IFU (Issued for Use)		WTJ	TBA	WTJ
07	10.5.2019	9-IFU (Issued for Use)		WTJ	TBA	WTJ
Rev.	Date	Reason for issue	Revision change	Made	Chk'd	Appr.