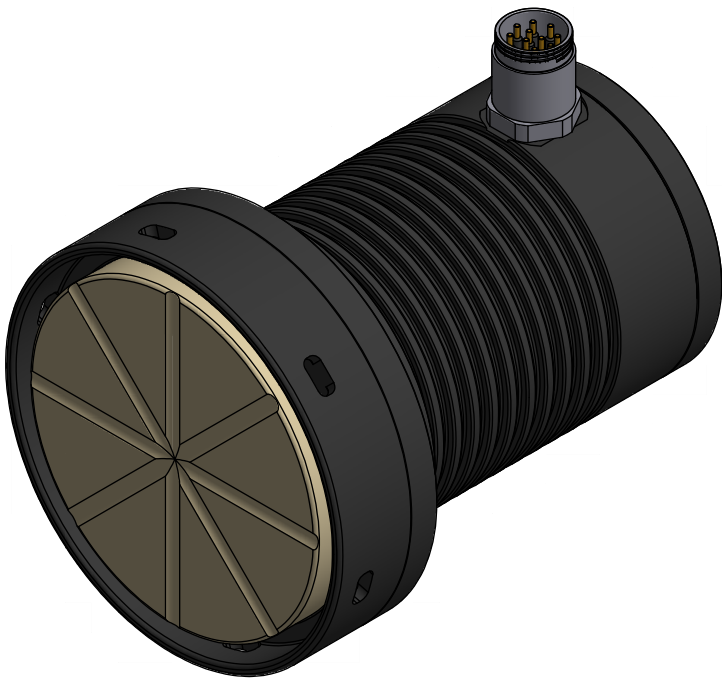
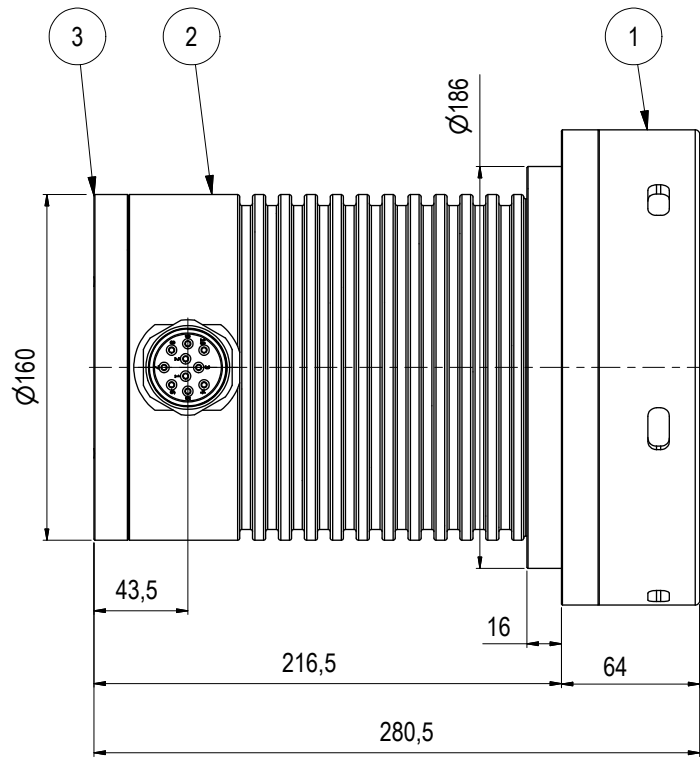
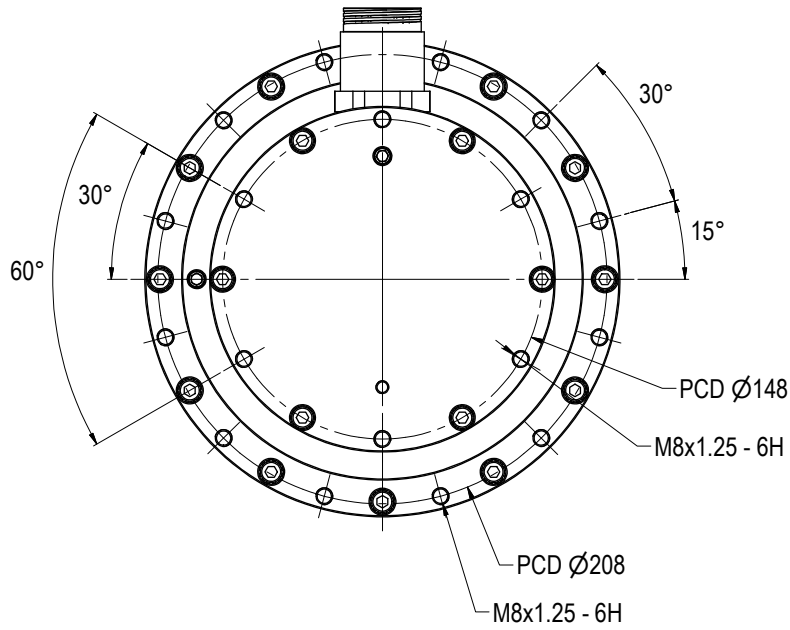
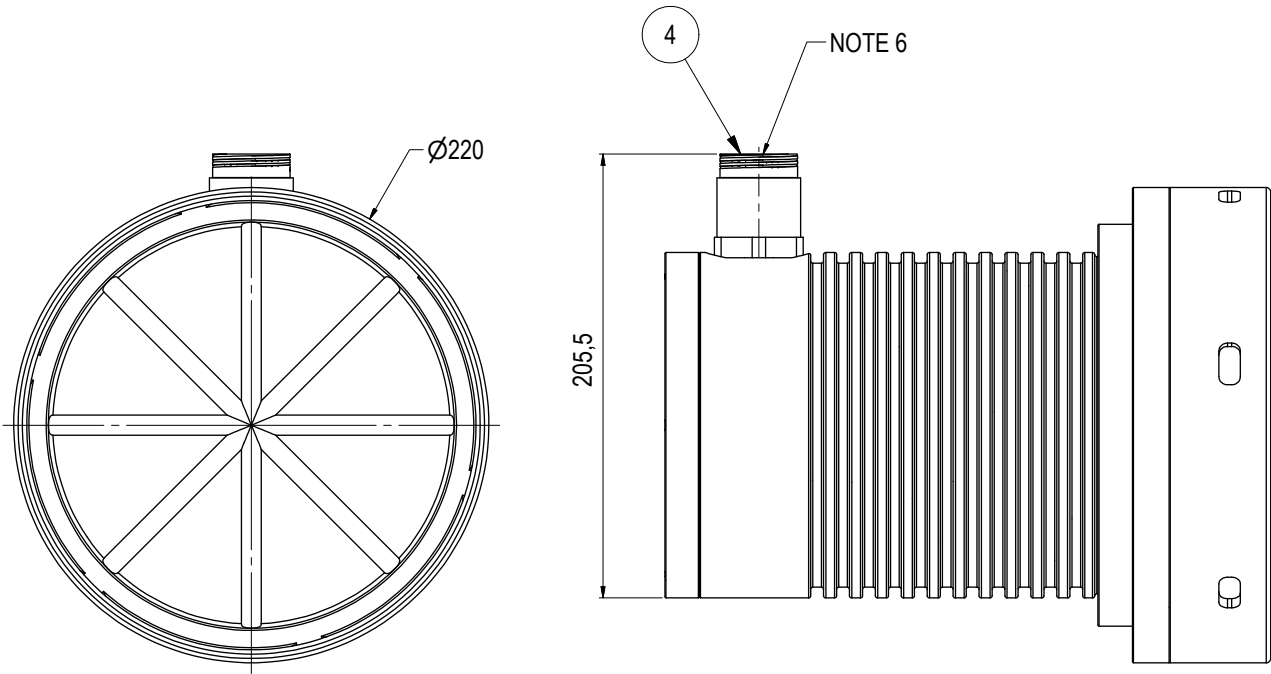


Parts List				
ITEM	QTY	PART No.	DESCRIPTION	MATERIAL
1	1	BB3142	Type D Inductive Element	
2	1	BB1716	Housing	AL 6082 T6
3	1	BB1646	End Lid Female	AL 6082 T6
4	1	100780	Connector SubConn BCR2410M	Stainless Steel



NOTE: 1
DESIGN CODE:
N/A

NOTE: 2
TECHNICAL CLASSIFICATION:
Article Type: 006-El. Connectors
Main Group: 6.01. Subsea USB
Intermediate Group: 6.28.04. 0,9-3,6KW Subsea USB
Sub Group: 6.28.157.02. Female Connector

NOTE: 3
INTERFACE INFORMATION:
Pressure Rating Bar: 304
Design Water Depth: 3000m
Material: Hard Anodized Aluminium
Weight: 12,6 kg
Volume: 4,94 dm³
Submerged Weight: 7,58 kg
Surface Area: 12424 cm²
Hydraulic: N/A
Mechanical: Flange Mount
Electrical: 370 VDC Input, Subconn BCR2410M
Com. & Protocol: Ethernet & RS232/RS485

NOTE: 4
OPERATION & MAINTENANCE INFORMATION:
600128-TD-0024

NOTE: 5
ADDITIONAL INFORMATION:
Design proof pressure - 365Bar.
Max allowable working pressure - 304Bar
Communication speed RS232 - Approx. 230 kbps
Communication speed Ethernet - Approx. 80 Mbps - (half Duplex)
Operating ambient temperature (0-30°C)
Storage temperature (-30-55°C for one month continuously)

NOTE 6
Connector Housing is atmospheric and not compensated

NOTE 7
Subconn Pin Configuration:

Primary Side input	
Connector: Subconn BCR2410M	
Pin #	Signal
Pin 1	360-380VDC
Pin 2	0 VDC
Pin 3	CHASSIS
Pin 4	RS232RX (input)
Pin 5	RS232TX (output)
Pin 6	RS232GND
Pin 7	TX_p
Pin 8	TX_n
Pin 9	RX_p
Pin 10	RX_n

10	9.1.2024	9-IFU (Issued for Use)		WTJ	LGH	WTJ
09	27.9.2019	9-IFU (Issued for Use)		WTJ	TBA	WTJ
08	31.7.2019	9-IFU (Issued for Use)		WTJ	TBA	WTJ
07	10.5.2019	9-IFU (Issued for Use)		WTJ	TBA	WTJ
Rev.	Date	Reason for issue	Revision change	Made	Chk'd	Appr.

Dwg Scale: NTS	Drawing title: Type D 2kW Primary Flat Inductive	
Dwg Proj: A3		
Dwg Format: A3	Drawing number: BB1719	Rev. 10