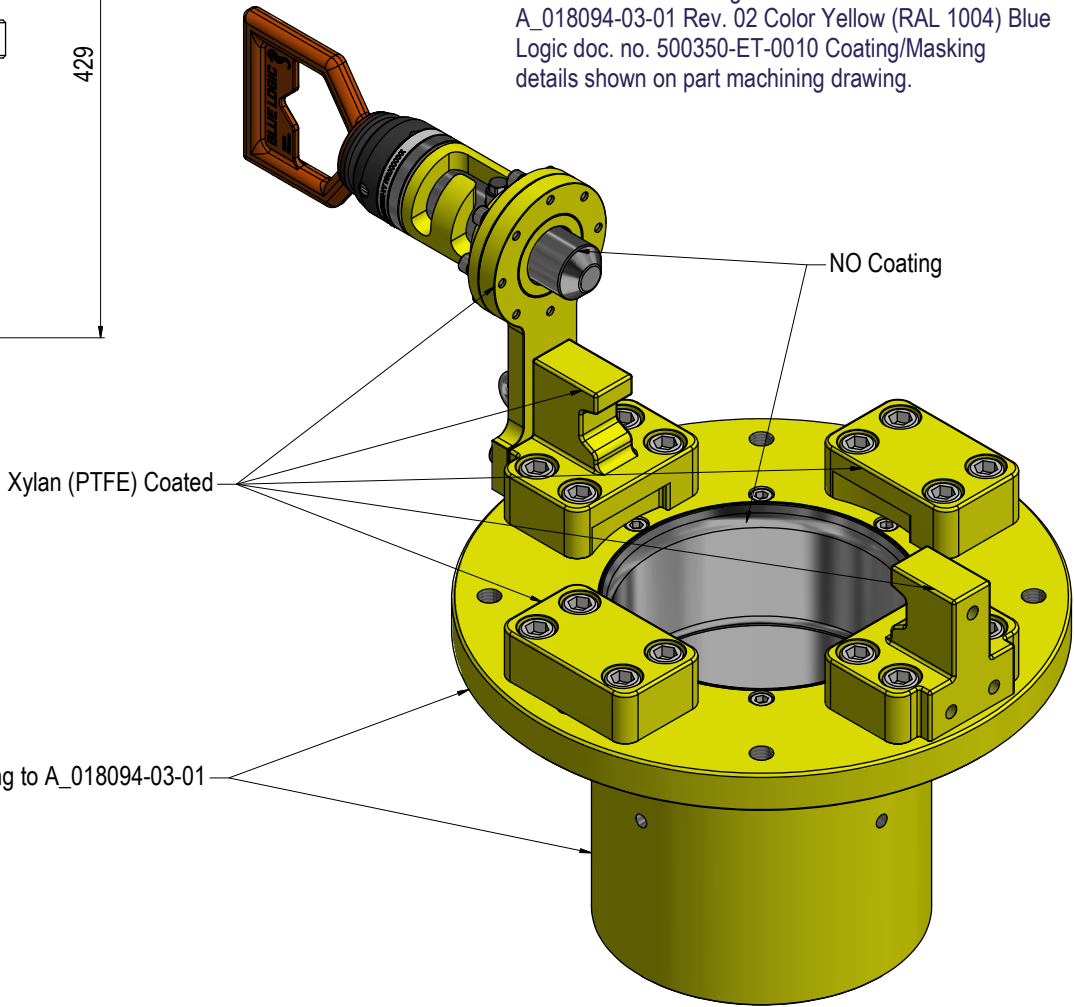
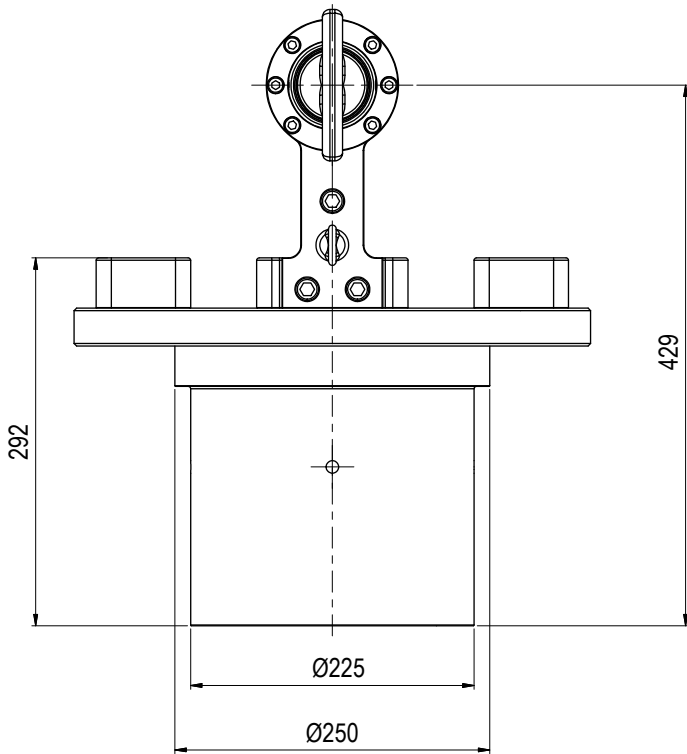
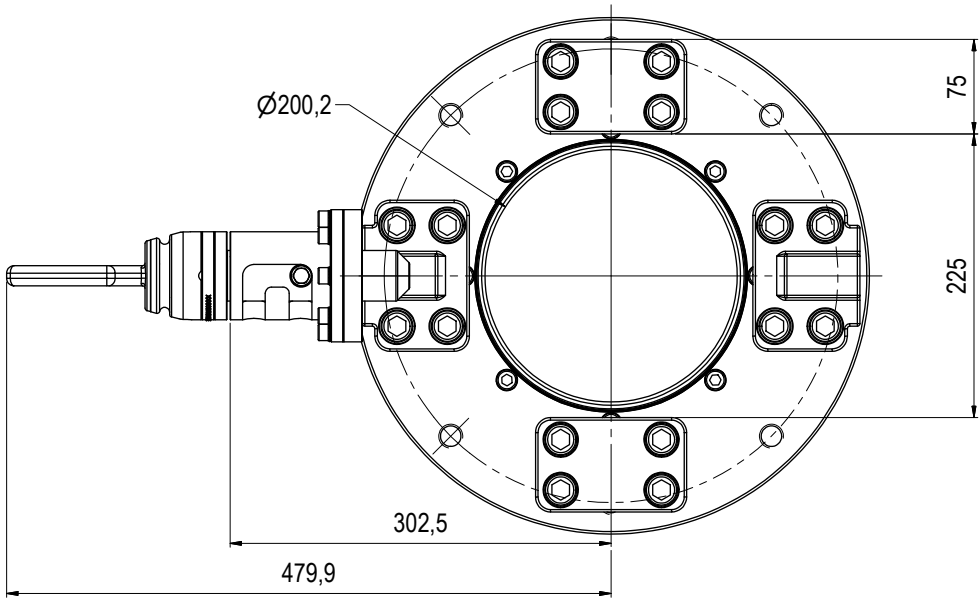
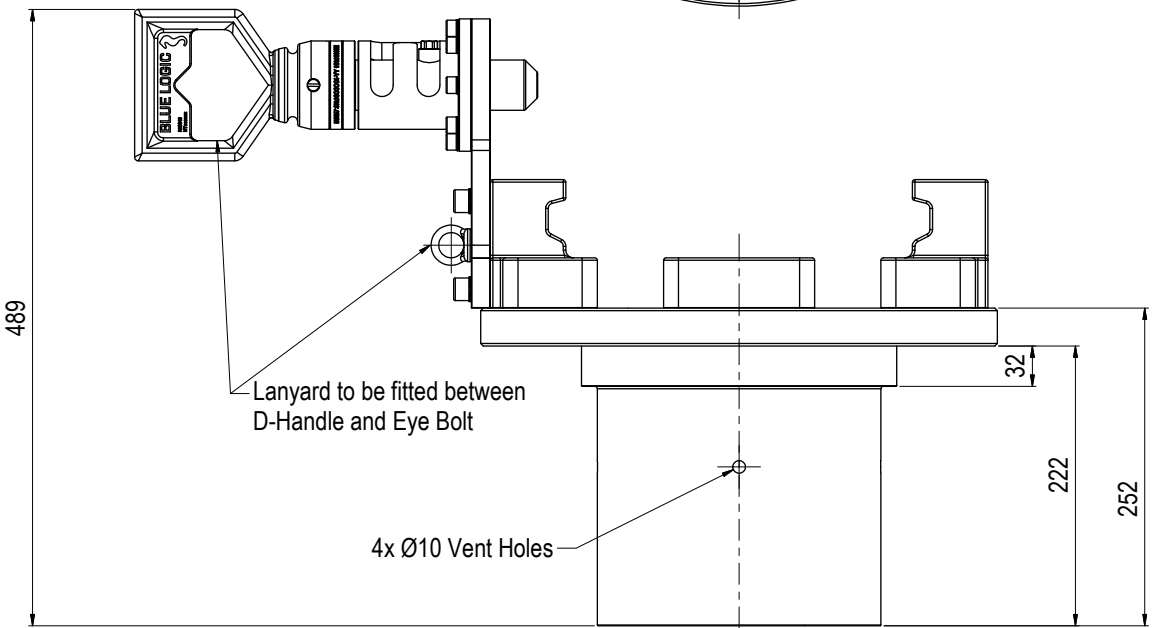
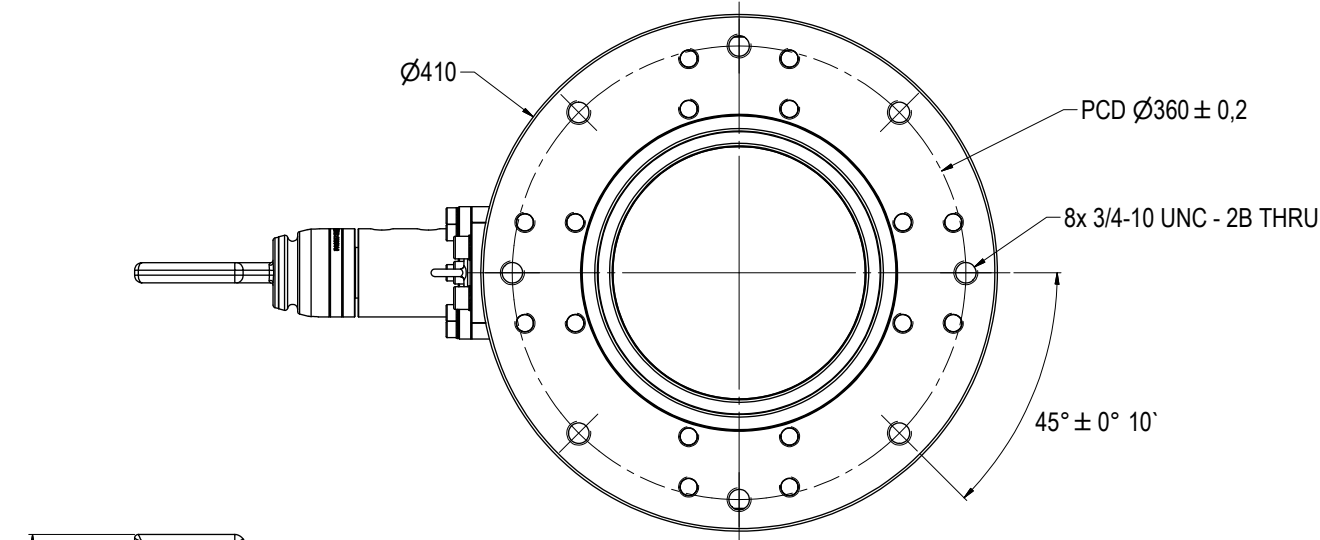


Parts List						
ITEM	QTY	PART No.	CUSTOMER P/N	TITLE	PO ITEM POS	CUSTOMER PO NO
1	1	BB6563	2507265-01	Ø200 SP Parking Rec	00050	4513067950



NOTE: 1
DESIGN CODE:
API 17D / API 6A

NOTE: 2
TECHNICAL CLASSIFICATION:
Article Type: 003-Valve Stabs
Main Group: 3.09. Ø150+-Valvestab
Intermediate Group: 3.77.01. Stab
Sub Group: 3.77.330.1. Single

NOTE: 3
INTERFACE INFORMATION:
Pressure Rating Bar: 0
Design Water Depth: 3500
Material: See Note 4
Weight in Air: 58,5 kg
Volume: 7,52 dm³
Submerged Weight: 50,78 kg
Surface Area: 11995 cm²
Hydraulic: NA
Mechanical: 8x 3/4"-10 UNC @PCD360
Electrical: N/A
Com. & Protocol: N/A

NOTE 4
The Ø200 Single Port Parking Receptacle is designed for use with Ø200 Valve Stab. The receptacle is fabricated in Super Duplex and intended for Long Term submersion.

NOTE 5
To be coated according to Cameron doc no A_018094-03-01 Rev. 02 Color Yellow (RAL 1004) Blue Logic doc. no. 500350-ET-0010 Coating/Masking details shown on part machining drawing.

04	14.10.2021	7-IFC (Issued for Construction)		WTJ	HNJ	WTJ
03	7.9.2021	7-IFC (Issued for Construction)		HNJ	LGH	HNJ
02	26.7.2021	6-ICA (Issued for Client Approval)		WTJ	HNJ	WTJ
01	12.7.2021	2-IFT (Issued For Tender)		WTJ	LGH	HNJ
Rev.	Date	Reason for issue	Revision change	Made	Chk'd	Appr.



Dwg Scale:	NTS
Dwg Proj:	
Dwg Format:	A3

Drawing title:	Ø200 SP Parking Rec
Drawing number:	BB6563
Rev.	04