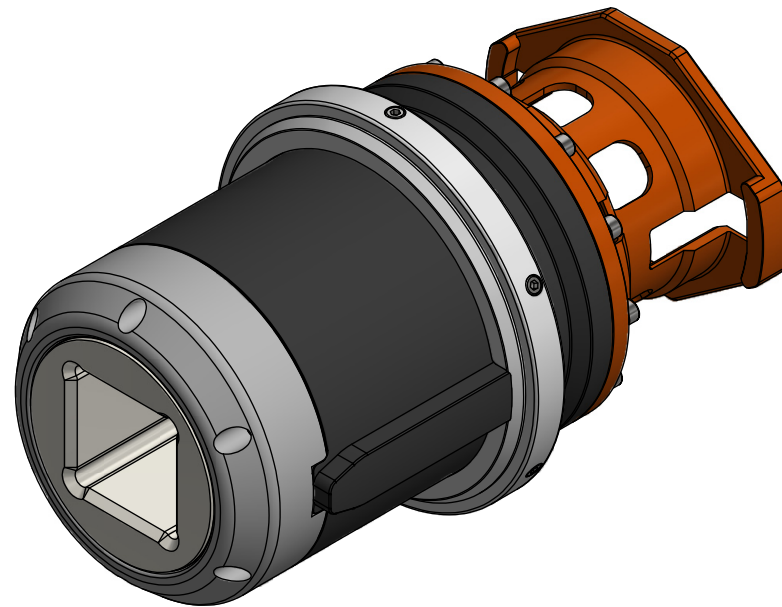


NOTE: 1
STANDARDS:
API 17D
Gear Design: ISO 6336

NOTE: 2
INTERFACE INFORMATION:
Hydraulic: N/A
Mechanical: API 17H Cl 4 in AKSO Cl 7 Short Out
Electrical: N/A
Data Com.: N/A

NOTE: 3
PROPERTIES:
Material Class: N/A
Temperature Class: N/A
Rated Work Press Bar: N/A
Test Pressure: N/A
Specification Level: N/A
Flow Rate: N/A
Qualification: API 17D Modified
Application: Long-term
Load Rating: N/A
Torque Rating: N/A
Design Water Depth: 3000m
Weight in Air: 88,9 kg
Volume: 13,48 dm³
Submerged Weight: 75,08 kg

NOTE: 4
ADDITIONAL INFORMATION:
Aker Solutions Class 7 Short version gearbox for Permanent use and installation subsea.
The gearbox is oil filled and pressure compensated using passive, integrated compensator. All seawater exposed parts fabricated in Super Duplex and Inconel 718, guide nose section in PEHD1000.
Gear Ratio 1:9,48 (optional alternative 1:9)
Other types of output interface available upon request.



04	26.4.2023	7-IFC (Issued for Construction)		HNJ	LGH	HNJ	<div><div>BLUE LOGIC</div><div><div></div></div></div> <div>This Drawing is the Property of Blue Logic AS © and must Not be Loaned, Reproduced or Transferred to others without written Permission</div>	Dwg Scale: NTS	<div><div></div></div>	Drawing title: Class 7 Gear Box Short 25kNm Long-term Aker	Drawing number: BB8670	Rev. 04
03	18.4.2023	7-IFC (Issued for Construction)		WTJ	TAN	WTJ		Dwg Proj:				
02	6.1.2023	7-IFC (Issued for Construction)		HNJ	LGH	HNJ		Dwg Format: A3				
01	7.9.2022	2-IFT (Issued For Tender)		WTJ	LGH	WTJ						
Rev.	Date	Reason for issue	Revision change	Made	Chk'd	Appr.						