

NOTE: 1
DESIGN CODE:
API 6A/ISO 10423 - NS EN 13445

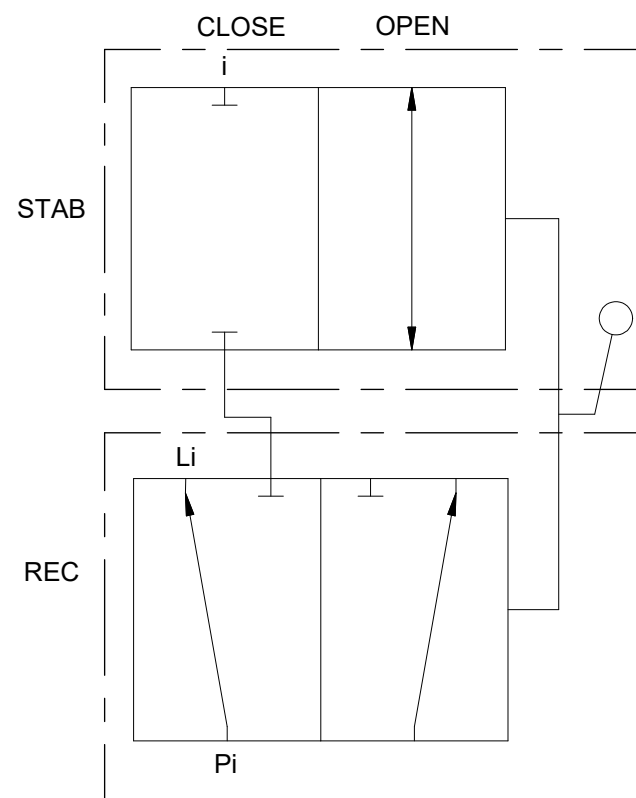
NOTE: 2
TECHNICAL CLASSIFICATION:
Article Type: 003-Valve Stabs
Main Group: 3.05. Ø100-Valvestab
Intermediate Group: 3.35.02. Receptacle
Sub Group: 3.35.77.3. Triple

NOTE: 3
INTERFACE INFORMATION:
Pressure Rating Bar: 345
Design Water Depth: 3000m
Material: Intervention
Weight: 45,6 kg
Volume: 5,85 dm^3
Submerged Weight: 39,59 kg
Surface Area: 8298 cm^2
Hydraulic: 2x1" BSP - 1x3/4" BSP
Mechanical: 5xM12 @PCD Ø230mm
Electrical: N/A
Com. & Protocol: N/A

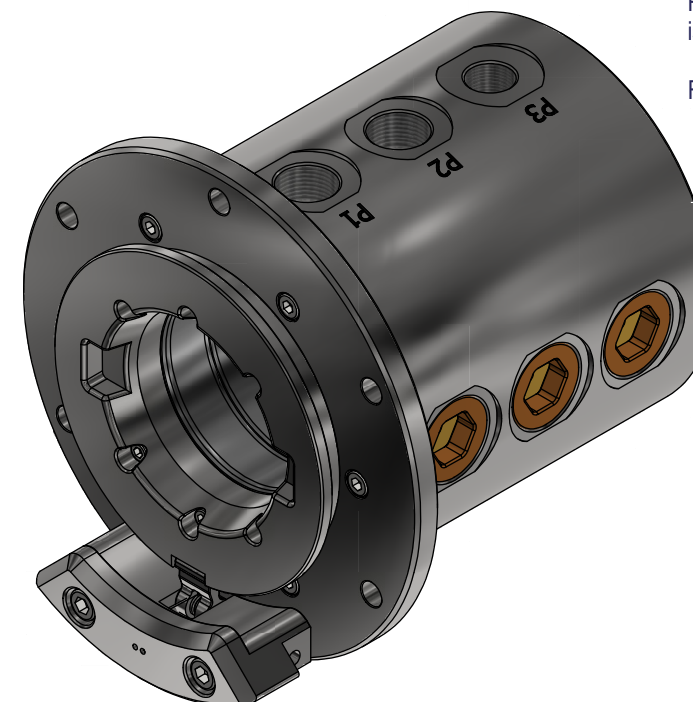
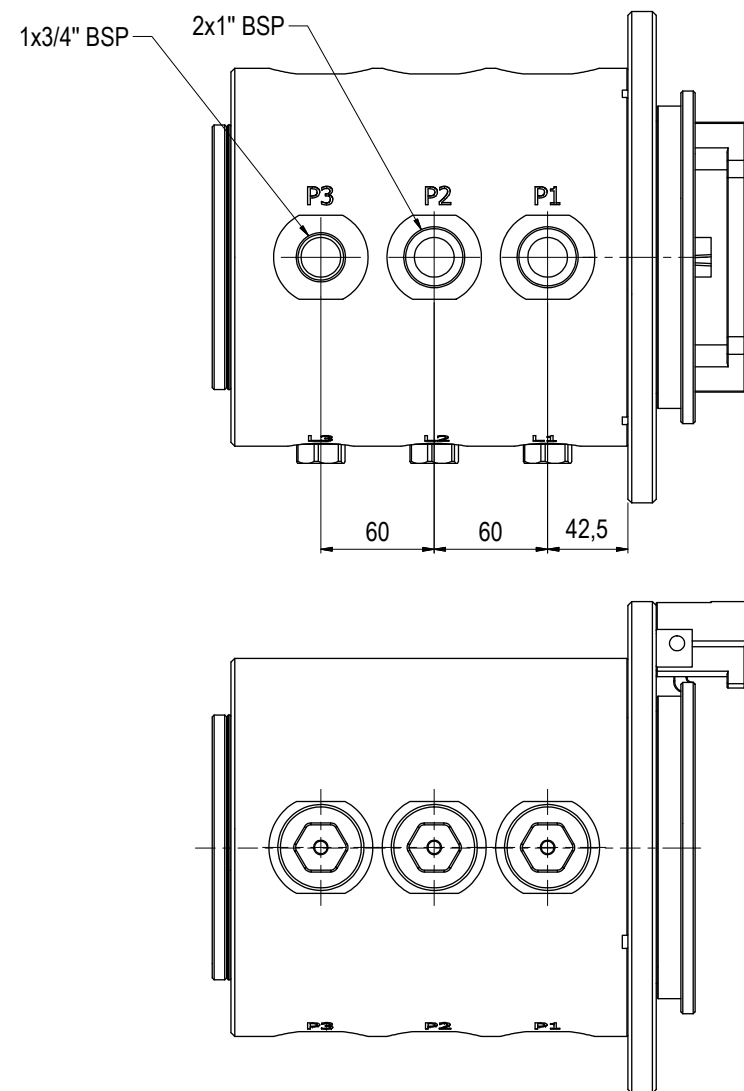
NOTE: 4
ADDITIONAL INFORMATION:
Female Valve Stab Receptacle for the Blue Logic Ø100 Valve Stab Program with L-Bore function for compensation of the hydraulic lines when the receptacle is in closed position. The Receptacle is equipped with integrated ball valves in each of the three individual hydraulic lines. The receptacle is designed for intervention purposes and should be connected to external CP system when submerged

The Valve functions are operated through the male valve stab after the stab is fully inserted into the receptacle.
Green position: Closed Valves, male stab can be inserted and retracted.
Red position: Valves are open, fluid runs through the connection. Stab is locked into the receptacle

For further information, see User Manual: 600135-TD-0001



SUBSCRIPT "i" REPRESENT THE PORT NUMBER BETWEEN 1-3



05	20.8.2019	9-IFU (Issued for Use)	New Rev BB2569	WTJ	LGH	WTJ
04	5.2.2019	9-IFU (Issued for Use)	Change - Added New Schematic	WTJ	LGH	WTJ
03	4.12.2018	9-IFU (Issued for Use)	Change of Approval Status	WTJ	HNJ	LGH
02	15.10.2018	2-IFT (Issued For Tender)	For Second Review	WTJ	LGH	WTJ
Rev.	Date	Reason for issue	Revision change	Made	Chk'd	Appr.

BLUE LOGIC

Dwg Scale: NTS
Dwg Proj:
Dwg Format: A3

Drawing title: Ø100 TP VStab Rec 5k Interv & L-Bore BSP 1"-3/4"

Drawing number: BB2567

Rev. 05