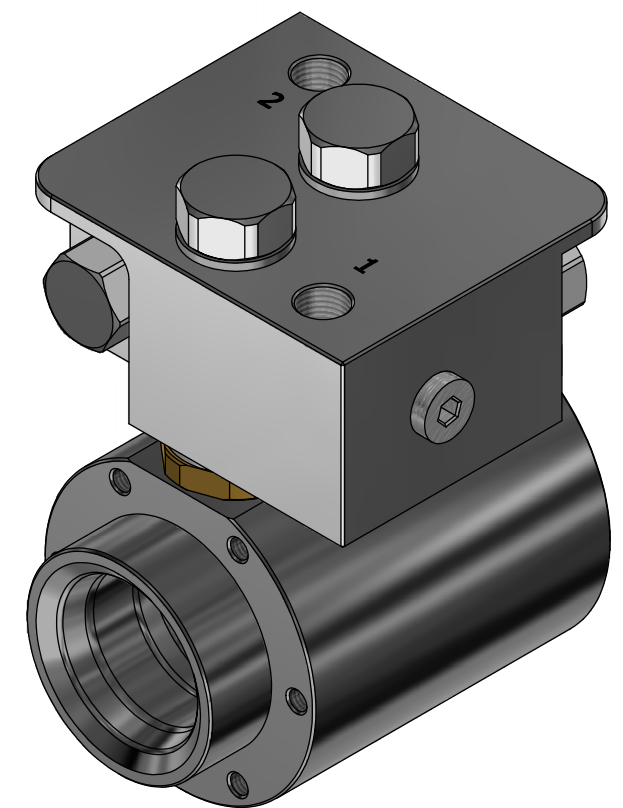
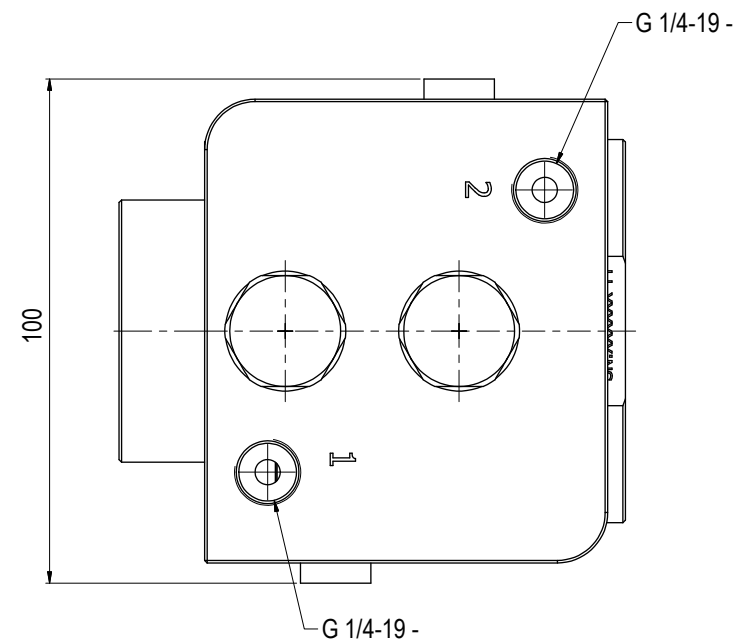
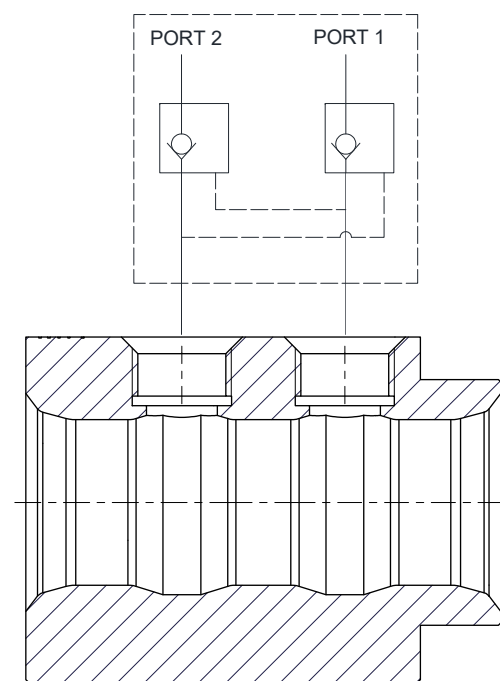


NOTE: 1  
DESIGN CODE:  
API 17D

NOTE: 2  
TECHNICAL CLASSIFICATION:  
Article Type: 099-Project Engineering  
Main Group: 99.01. Mechanical  
Intermediate Group: 99.38.05. Brackets  
Sub Group: 99.38.105.01 Brackets

NOTE: 3  
INTERFACE INFORMATION:  
Pressure Rating Bar: 350  
Material: Intervention  
Weight: 4,8 kg  
Volume: 0,61 dm<sup>3</sup>  
Surface Area: 1232 cm<sup>2</sup>  
Hydraulic: 1/4" BSP  
Mechanical: 6xM6 @PCD 66  
Electrical: N/A  
Com. & Protocol: N/A

NOTE: 4  
ADDITIONAL INFORMATION:  
Standard Blue Logic dual port Ø35 receptacle with integrated double acting pilot operated check valves, ideal for applications where a double acting hydraulic cylinder shall be operated from a hot stab. The valve block with the two cartridge-type pilot activated check valves is mounted directly onto a standard Blue Logic Ø35 dual port receptacle. Receptacle can be mounted like normal thru existing interface. Max working pressure for receptacle is 690bar, however max working pressure for the check valves is 350bar (Pressure tested to 1,5xWP). Full functional test and pressure test to max working pressure for the check valves is included in standard



06	14.12.2018	9-IFU (Issued for Use)		HNJ	WTJ	HNJ	<b>BLUE LOGIC</b>	Dwg Scale: NTS	Drawing title: Ø35 DP Rec wDouble Acting Pilot Operated Check Valve
05	29.11.2017	9-IFU (Issued for Use)		WTJ	LAE	WTJ		Dwg Proj:	
04	21.11.2017	9-IFU (Issued for Use)		WTJ	LAE	WTJ		Dwg Format: A3	
03	14.11.2017	9-IFU (Issued for Use)		HNJ	LAE	HNJ			
Rev.	Date	Reason for issue	Revision change	Made	Chk'd	Appr.		Drawing number: BA9169	Rev: 06