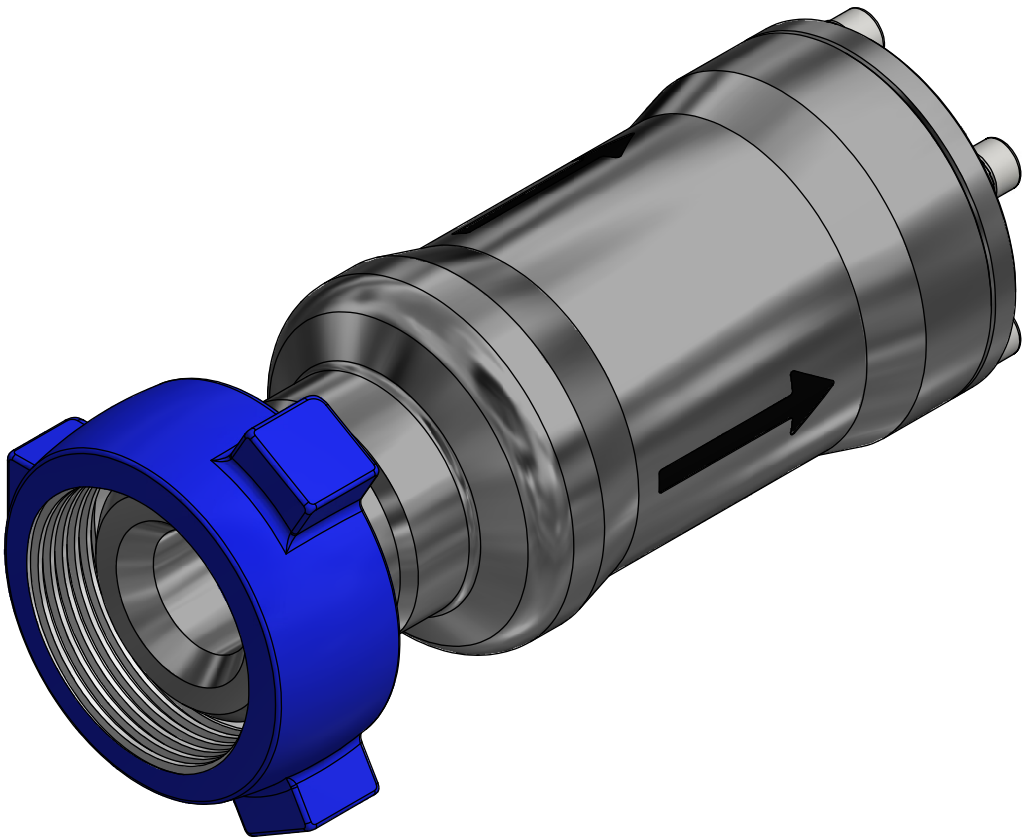
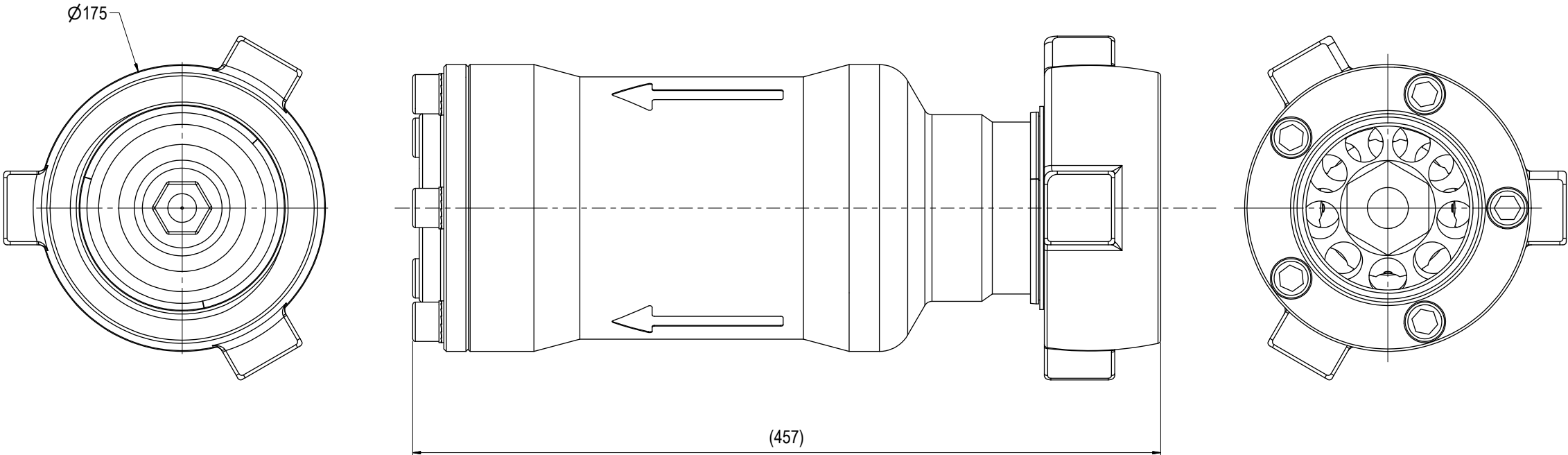


NOTE: 1
ADDITIONAL INFORMATION:
Pressure Setting 2-10 Bar

NOTE: 2
TECHNICAL CLASSIFICATION:
Article Type: 007-Valves
Main Group: 7.01. One Way Valves
Intermediate Group: 7.39.09. 3"
Sub Group: 7.39.210.02. 2+ -10 Bar

NOTE: 3
INTERFACE INFORMATION:
Pressure Rating Bar: 690
Material: Intervention
Weight: 39,4 kg
Volume: 6,07 dm^3
Surface Area: 9103 cm^2
Hydraulic: 3" Weco 1502
Mechanical: N/A
Electrical: N/A
Com. & Protocol: N/A

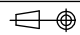


07	4.11.2022	9-IFU (Issued for Use)		WTJ	HNJ	WTJ
06	18.5.2022	9-IFU (Issued for Use)		WTJ	HNJ	WTJ
05	28.5.2021	9-IFU (Issued for Use)		WTJ	HNJ	WTJ
04	29.1.2018	9-IFU (Issued for Use)		WTJ	LAE	WTJ
Rev.	Date	Reason for issue	Revision change	Made	Chk'd	Appr.

BLUE LOGIC



This Drawing is the Property of Blue Logic AS © and must Not be Loaned, Reproduced or Transferred to others without written Permission

Dwg Scale: NTS	Drawing title: 3" Check Valve Fig. 1502 10K 2Bar Cracking Pr. Open Outlet
Dwg Proj: 	
Dwg Format: A3	
Drawing number: BA8722	Rev. 07