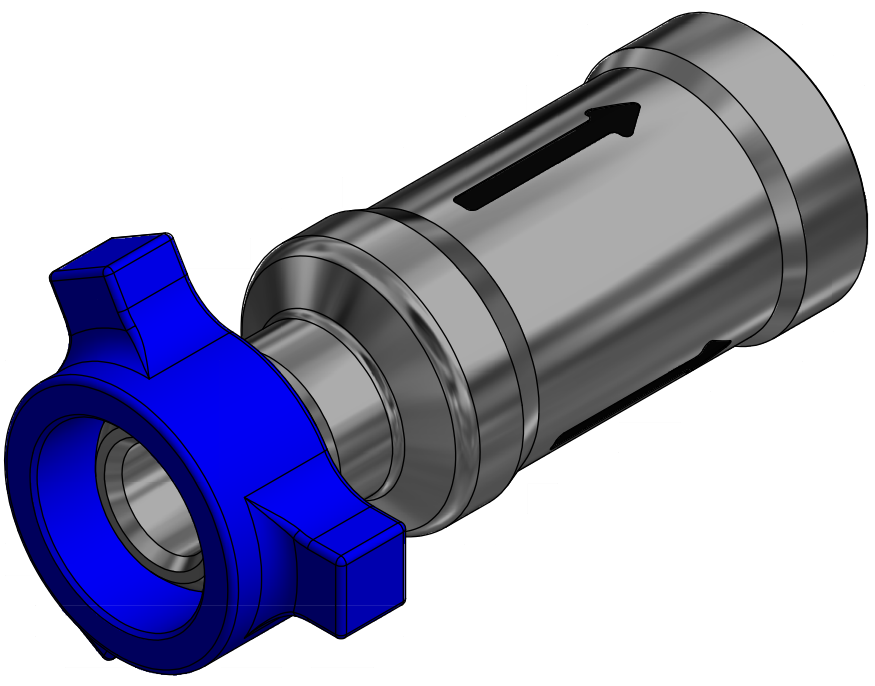


NOTE: 1
ADDITIONAL INFORMATION:
Pressure Setting 2-10bar

NOTE: 2
TECHNICAL CLASSIFICATION:
Article Type: 007-Valves
Main Group: 7.01. One Way Valves
Intermediate Group: 7.39.07. 2"
Sub Group: 7.39.208.02. 2+ -10 Bar

NOTE: 3
INTERFACE INFORMATION:
Pressure Rating Bar: 690
Material: Intervention
Weight: 22 kg
Volume: 2,79 dm^3
Surface Area: 4443 cm^2
Hydraulic: 2" Fig. 1502
Mechanical: N/A
Electrical: N/A
Com. & Protocol: N/A



| | | | | | | |
|------|-----------|------------------------|-----------------|------|-------|-------|
| 04 | 18.5.2022 | 9-IFU (Issued for Use) | | WTJ | HNJ | WTJ |
| 03 | 5.4.2022 | 9-IFU (Issued for Use) | | WTJ | HNJ | WTJ |
| 02 | 29.1.2018 | 9-IFU (Issued for Use) | | WTJ | LAE | WTJ |
| 01 | 5.7.2016 | 9-IFU (Issued for Use) | | HNJ | WTJ | HNJ |
| Rev. | Date | Reason for issue | Revision change | Made | Chk'd | Appr. |



| | | | |
|-------------------|--|-----------|------------|
| Dwg Scale: NTS | Drawing title: 2" Check Valve Fig. 1502 10K Main Assy | Dwg Proj: | |
| Dwg Format: A3 | | | |
| | Drawing number: BA8878 | | Rev. 04 |