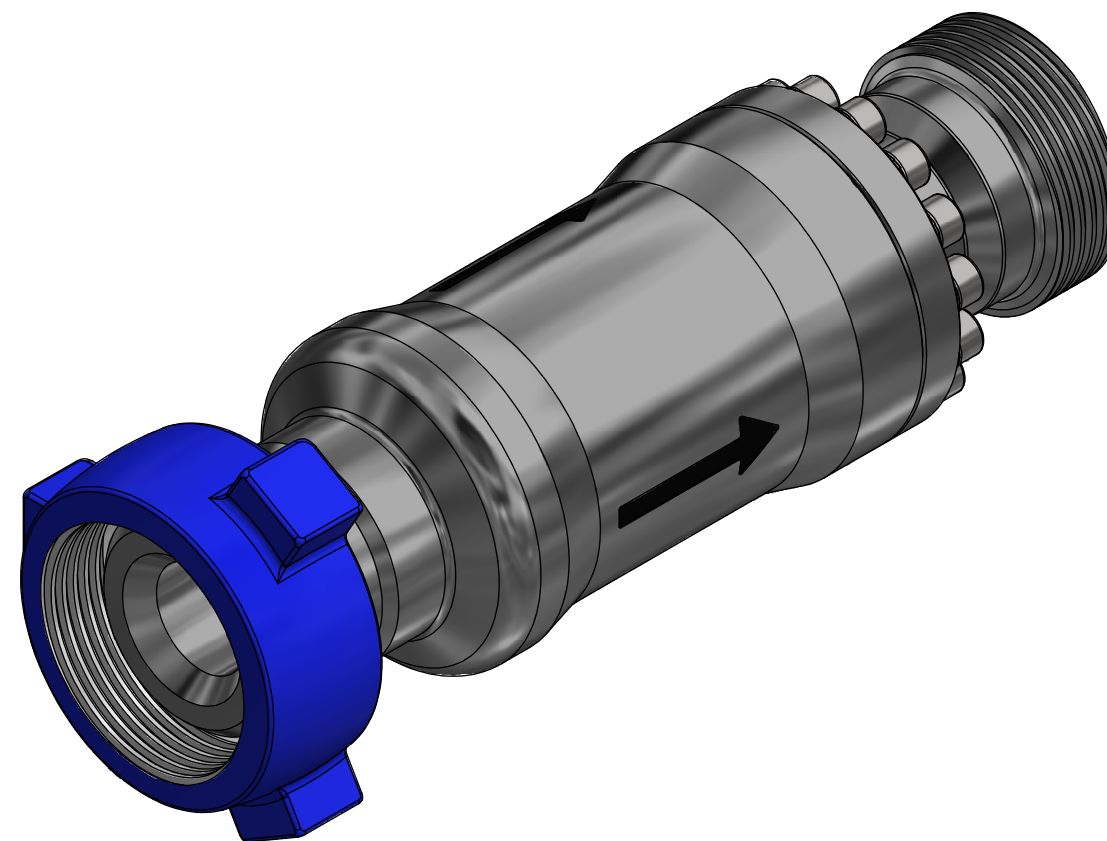


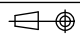
NOTE: 1  
ADDITIONAL INFORMATION:  
Pressure Setting 2-10bar

NOTE: 2  
TECHNICAL CLASSIFICATION:  
Article Type: 007-Valves  
Main Group: 7.01. One Way Valves  
Intermediate Group: 7.39.09. 3"  
Sub Group: 7.39.210.02. 2+ -10 Bar

NOTE: 3  
INTERFACE INFORMATION:  
Pressure Rating Bar: 690  
Material: Intervention  
Weight: 39,4 kg  
Volume: 7,28 dm^3  
Surface Area: 11275 cm^2  
Hydraulic: 3" Fig. 1502  
Mechanical: N/A  
Electrical: N/A  
Com. & Protocol: N/A



05	4.11.2022	9-IFU (Issued for Use)		WTJ	HNJ	WTJ
04	18.5.2022	9-IFU (Issued for Use)		WTJ	HNJ	WTJ
03	28.5.2021	9-IFU (Issued for Use)		WTJ	HNJ	WTJ
02	29.1.2018	9-IFU (Issued for Use)		WTJ	LAE	WTJ
Rev.	Date	Reason for issue	Revision change	Made	Chk'd	Appr.

Dwg Scale: NTS		Drawing title: 3" Check Valve Fig. 1502 10K 6,5Bar Cracking Pressure	
Dwg Proj:			
Dwg Format: A3		Drawing number: BA8886	Rev. 05