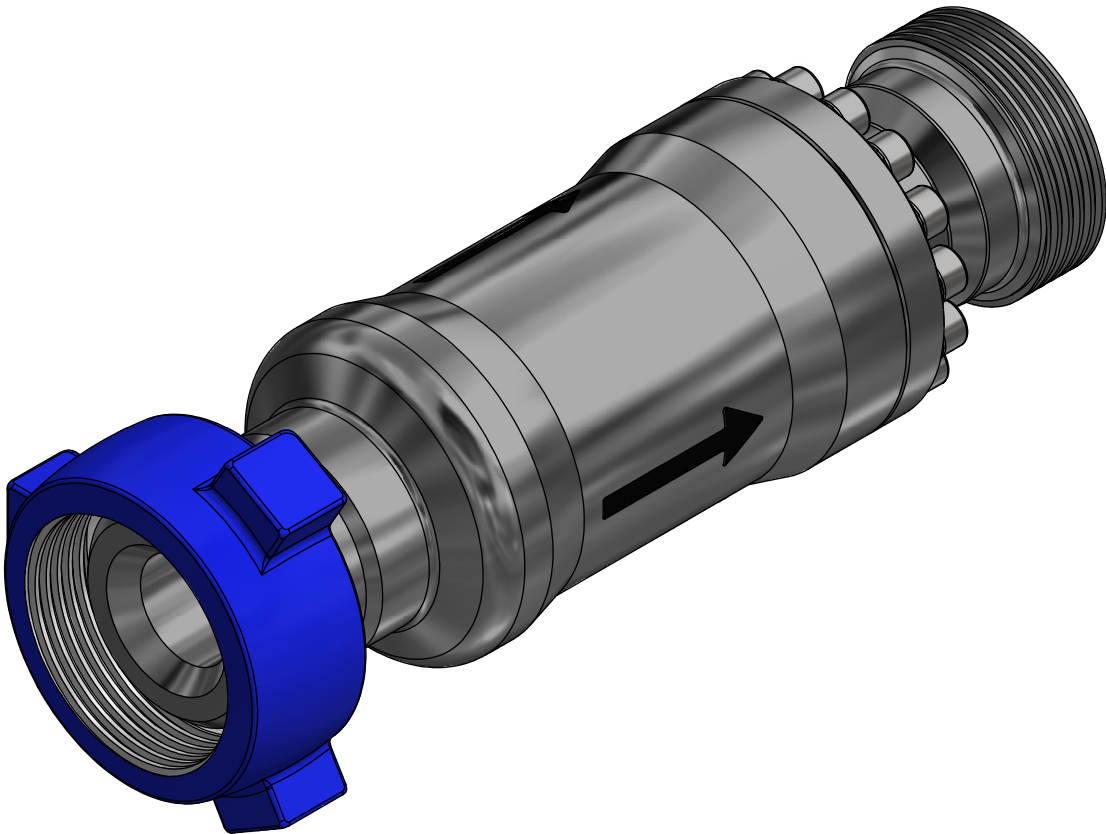


NOTE: 1
ADDITIONAL INFORMATION:
Pressure Setting: 2-10 Bar

NOTE: 2
TECHNICAL CLASSIFICATION:
Article Type: 007-Valves
Main Group: 7.01. One Way Valves
Intermediate Group: 7.39.09. 3"
Sub Group: 7.39.210.02. 2+ -10 Bar

NOTE: 3
INTERFACE INFORMATION:
Pressure Rating Bar: 690
Material: Intervention
Weight: 39,4 kg
Volume: 7,23 dm^3
Surface Area: 11060 cm^2
Hydraulic: 3" Weco 1502
Mechanical: N/A
Electrical: N/A
Com. & Protocol: N/A



07	4.11.2022	9-IFU (Issued for Use)		WTJ	HNJ	WTJ	<div>BLUE LOGIC</div> <div>This Drawing is the Property of Blue Logic AS © and must Not be Loaned, Reproduced or Transferred to others without written Permission</div>	Dwg Scale: NTS		Drawing title: 3" Check Valve Fig. 1502 10K 2Bar Cracking Pressure	Drawing number: BA8675	Rev. 07
06	18.5.2022	9-IFU (Issued for Use)		WTJ	HNJ	WTJ		Dwg Proj:				
05	28.5.2021	9-IFU (Issued for Use)		WTJ	HNJ	WTJ		Dwg Format: A3				
04	16.1.2018	9-IFU (Issued for Use)		WTJ	LAE	WTJ						
Rev.	Date	Reason for issue	Revision change	Made	Chk'd	Appr.						