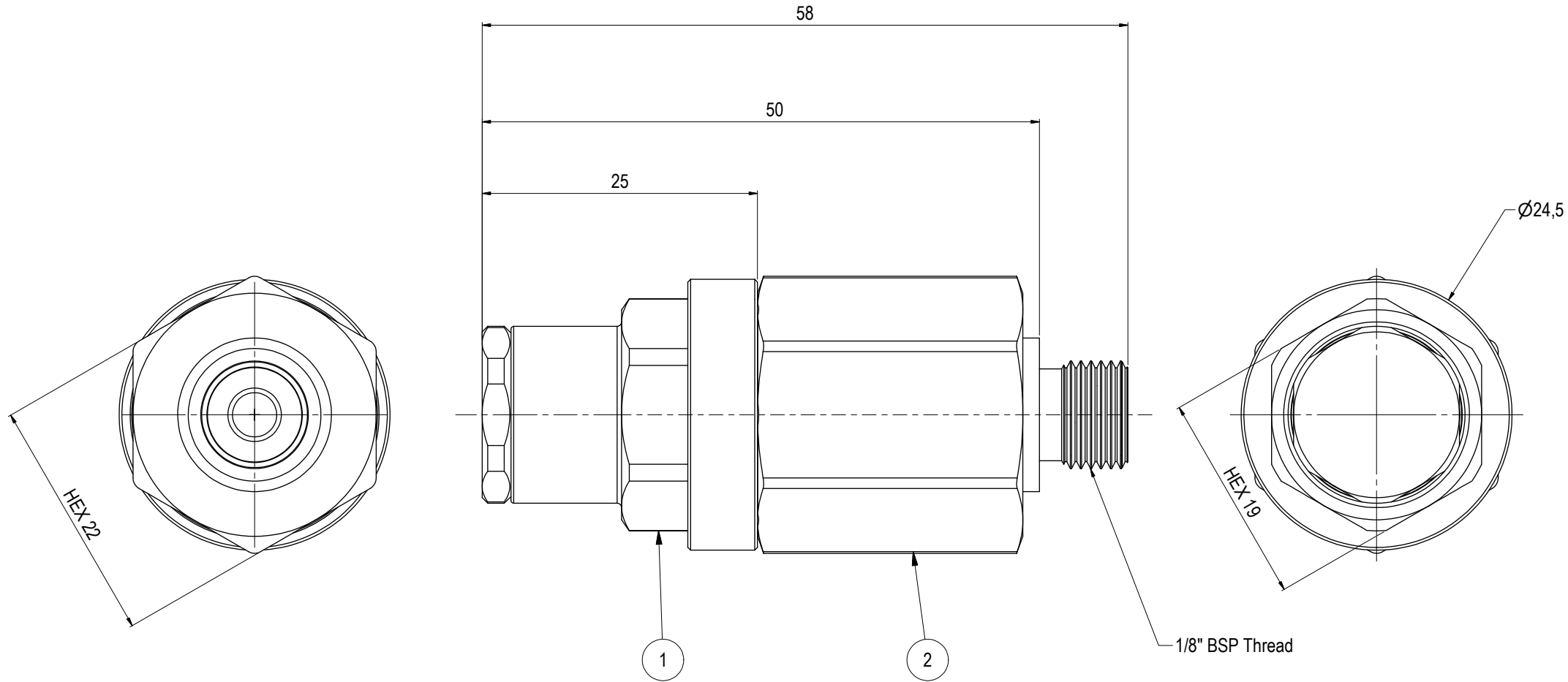


| Parts List | | | |
|------------|-----|----------|-------------------------------|
| ITEM | QTY | PART No. | TITLE |
| 1 | 1 | BA1382 | Relief Valve 0,8 Bar 3/8" BSP |
| 2 | 1 | 102501 | BSP Fitting |



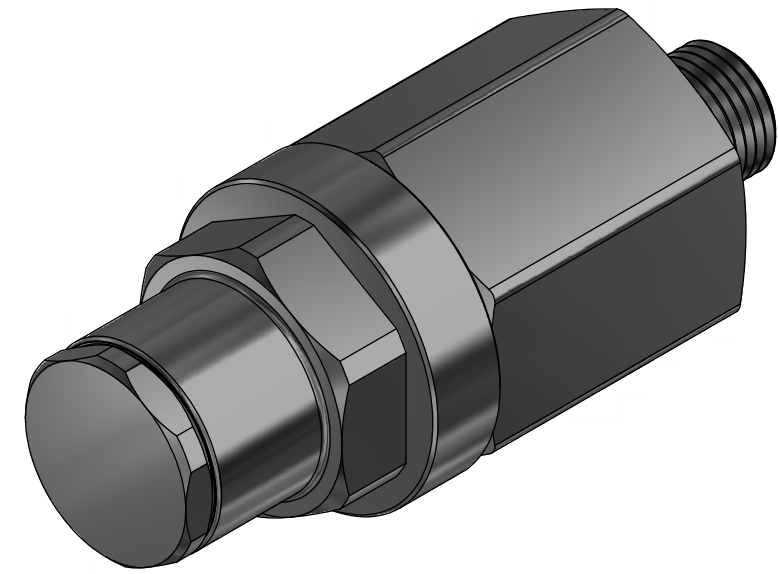
NOTE: 1
STANDARDS:
N/A

NOTE: 2
INTERFACE INFORMATION:
Hydraulic: 1/8" BSP
Mechanical: N/A
Electrical: N/A
Data Com.: N/A

NOTE: 3
PROPERTIES:
Material Class:
Temperature Class: 0,8
Rated Work Press Bar:
Test Pressure:
Specification Level:
Flow Rate:
Qualification:
Application:
Load Rating:
Torque Rating:
Design Water Depth: 0,1 kg
Weight in Air: 0,01 dm³
Volume: 0,09 kg
Submerged Weight:

NOTE: 4
WEB LINK:
<http://e-sea.bluelogic.no/main.aspx?page=article&artno=BB0042>

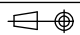
NOTE: 5
ADDITIONAL INFORMATION:
These Relief Valves can be delivered with various cracking pressure on customers request.
Standard temperature rating 0-60 °C
Fluid: hydraulic oils.
This Valve is typical made for use as safety pressure relief.
For other fluids and temp range, confer with Blue Logic.



| Rev. | Date | Reason for issue | Revision change | Made | Chk'd | Appr. |
|------|-----------|------------------------|-----------------|------|-------|-------|
| 01 | 18.4.2017 | 9-IFU (Issued for Use) | | HNJ | WTJ | HNJ |

BLUE LOGIC 

This Drawing is the Property of Blue Logic AS © and must Not be Loaned, Reproduced or Transferred to others without written Permission

| | | | | | |
|-------------------|----------------------------------------------------------------------------------------------------|-------------------|-------------------------------------------------------------------------|---------------------------|------------|
| Dwg Scale: NTS | Dwg Proj:  | Dwg Format: A3 | Drawing title: Relief Valve 0,8 Bar 3/8" BSP with 1/8" BSP M Adapter | Drawing number: BB0042 | Rev. 01 |
|-------------------|----------------------------------------------------------------------------------------------------|-------------------|-------------------------------------------------------------------------|---------------------------|------------|