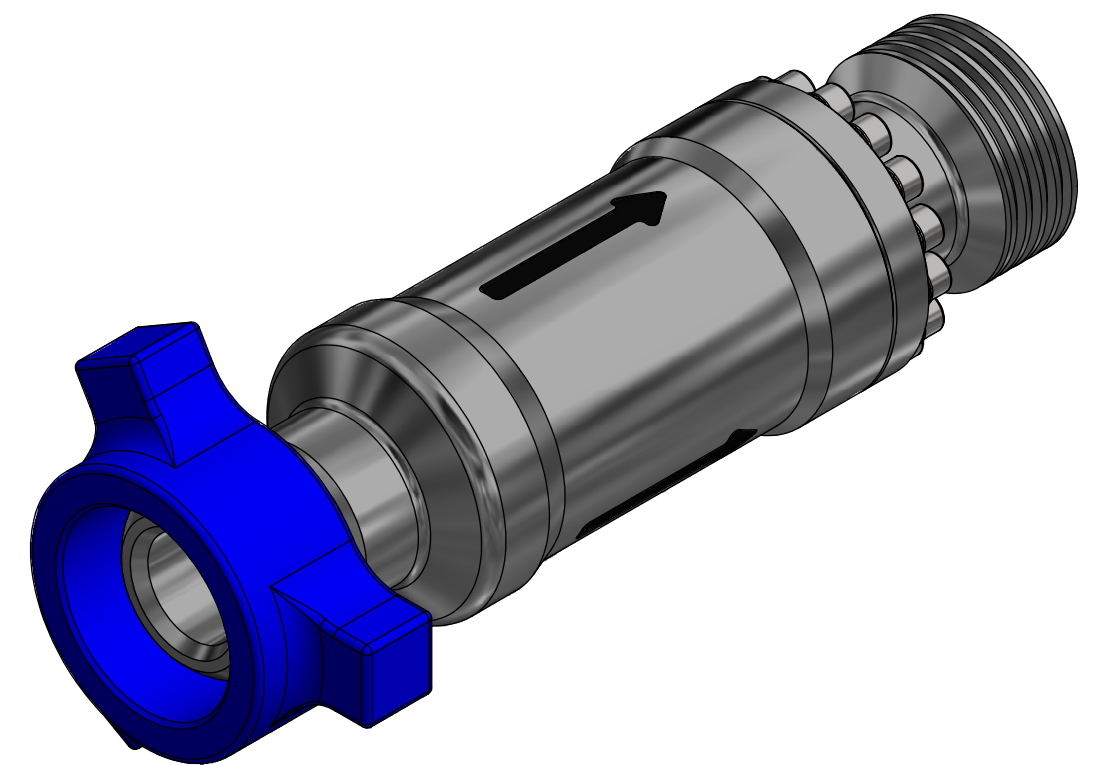
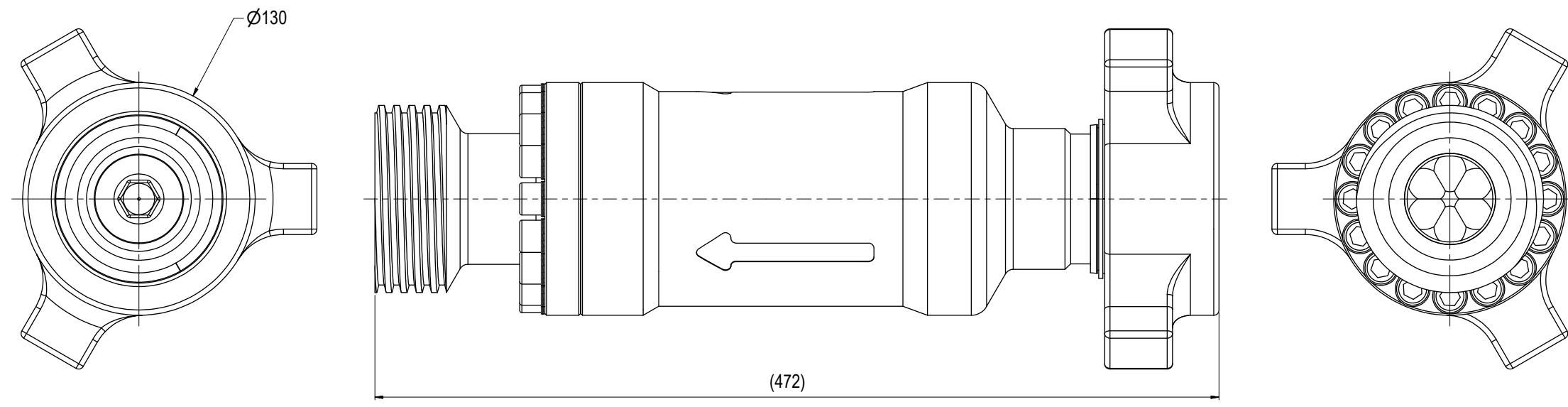


NOTE: 1  
 ADDITIONAL INFORMATION:  
 Pressure Setting: 2-10 Bar

NOTE: 2  
 TECHNICAL CLASSIFICATION:  
 Article Type: 007-Valves  
 Main Group: 7.01. One Way Valves  
 Intermediate Group: 7.39.07. 2"  
 Sub Group: 7.39.208.02. 2+ -10 Bar

NOTE: 3  
 INTERFACE INFORMATION:  
 Pressure Rating Bar: 690  
 Material: Intervention  
 Weight: 28,1 kg  
 Volume: 3,6 dm<sup>3</sup>  
 Surface Area: 6573 cm<sup>2</sup>  
 Hydraulic: 2" Weco 1502  
 Mechanical: N/A  
 Electrical: N/A  
 Com. & Protocol: N/A



05	5.4.2022	9-IFU (Issued for Use)		WTJ	HNJ	WTJ
04	29.1.2018	9-IFU (Issued for Use)		WTJ	LAE	WTJ
03	5.7.2016	9-IFU (Issued for Use)		HNJ	WTJ	HNJ
02	13.6.2016	9-IFU (Issued for Use)		HNJ	LGH	HNJ
Rev.	Date	Reason for issue	Revision change	Made	Chk'd	Appr.



Dwg Scale: NTS	Drawing title: 2" Check Valve Fig. 1502 10K 2Bar Cracking Pressure
Dwg Proj: [Symbol]	
Dwg Format: A3	
Drawing number: BA8659	Rev. 05