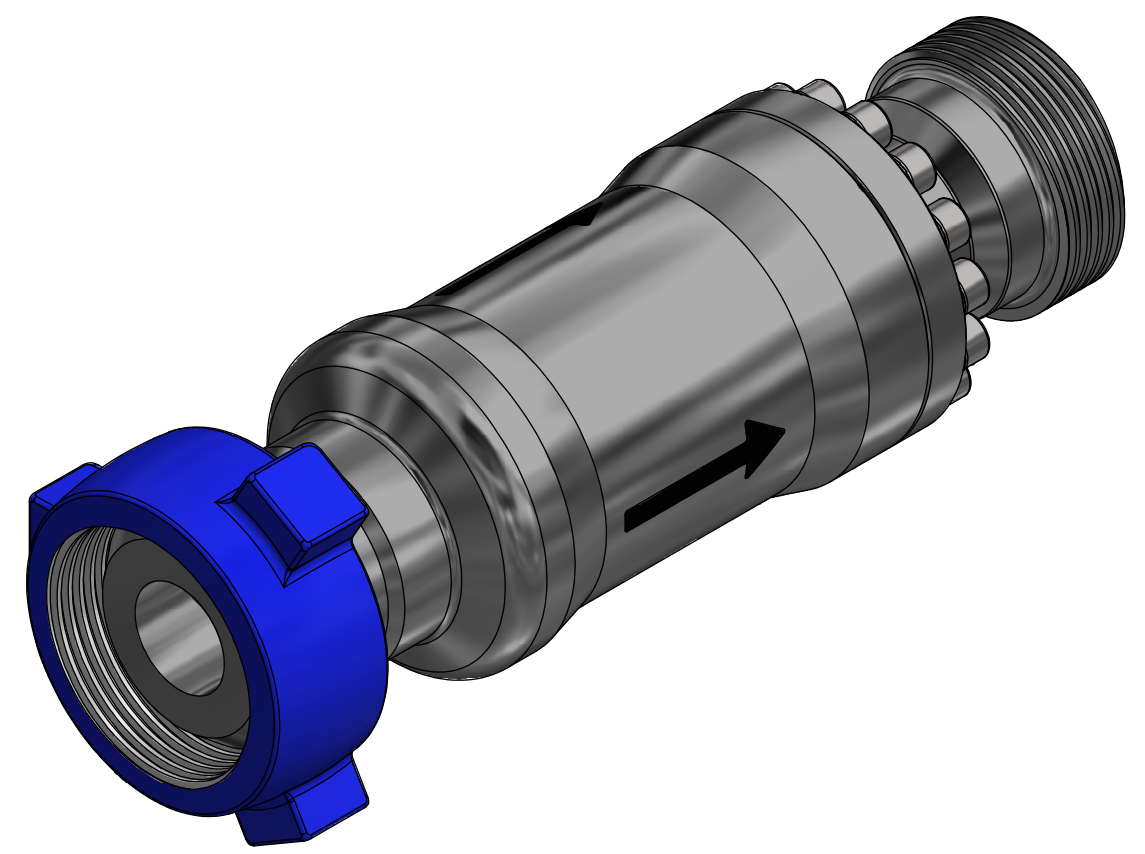
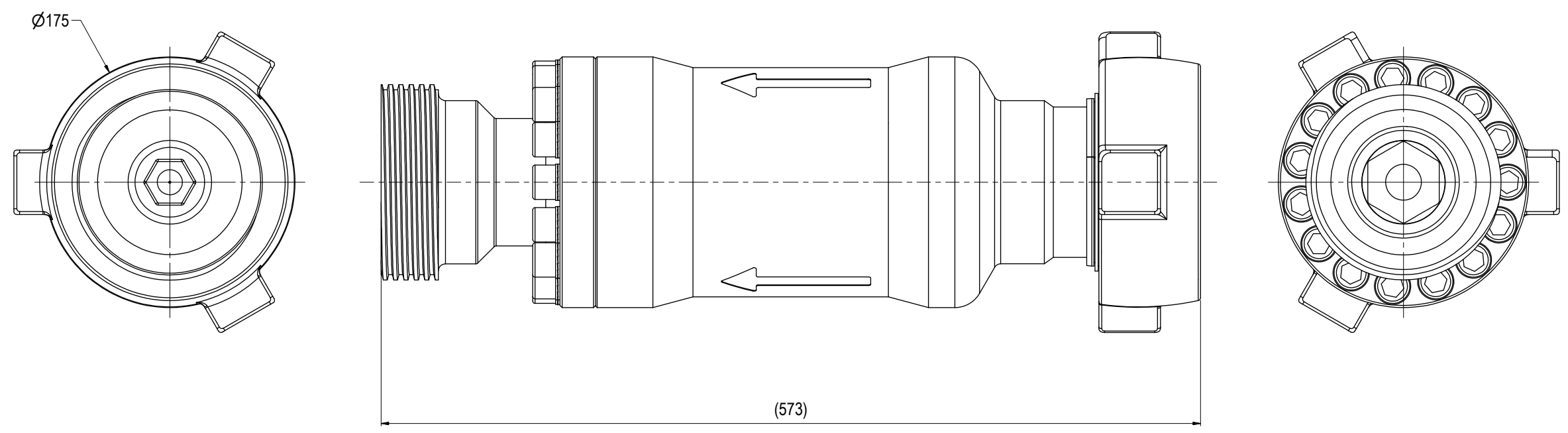


NOTE: 1
 ADDITIONAL INFORMATION:
 Pressure Setting 2-10bar

NOTE: 2
 TECHNICAL CLASSIFICATION:
 Article Type: 007-Valves
 Main Group: 7.01. One Way Valves
 Intermediate Group: 7.39.09. 3"
 Sub Group: 7.39.210.02. 2+ -10 Bar

NOTE: 3
 INTERFACE INFORMATION:
 Pressure Rating Bar: 690
 Material: Intervention
 Weight: 39,4 kg
 Volume: 7,36 dm³
 Surface Area: 11331 cm²
 Hydraulic: 3" Fig. 1502
 Mechanical: N/A
 Electrical: N/A
 Com. & Protocol: N/A



03	28.5.2021	9-IFU (Issued for Use)		WTJ	HNJ	WTJ
02	29.1.2018	9-IFU (Issued for Use)		WTJ	LAE	WTJ
01	6.7.2016	9-IFU (Issued for Use)		HNJ	WTJ	HNJ
Rev.	Date	Reason for issue	Revision change	Made	Chk'd	Appr.



Dwg Scale: NTS	Drawing title: 3" Check Valve Fig. 1502 10K 6,5bar Cracking Pressure
Dwg Proj: ☐ ⊕	
Dwg Format: A3	Drawing number: BA8886
	Rev: 03