

NOTE: 1
DESIGN CODE:
API 17H

NOTE: 2
TECHNICAL CLASSIFICATION:
Article Type: 008-Actuation
Main Group: 8.03. ISO-6-7 Actuation
Intermediate Group: 8.46.03. Gear
Sub Group: 8.46.128.02. Intervention

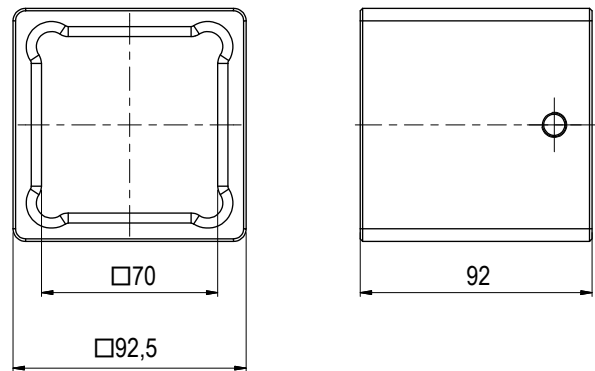
NOTE: 3
INTERFACE INFORMATION:
Pressure Rating Bar: 300
Design Water Depth: 3000m
Material: N/A
Weight in Air: 61,6 kg
Volume: 12,68 dm³
Submerged Weight: 48,58 kg
Surface Area: 26281 cm²
Hydraulic: N/A
Mechanical: ISO Class 4 Input
Electrical: N/A
Com. & Protocol: N/A

NOTE: 4
ADDITIONAL INFORMATION:
API 17H Class 4 to 7 gearbox for short term use / intervention.
The gearbox is oil filled and pressure compensated using passive, integrated compensator. Main housing constructed in hard anodized Aluminum, nose section in POM and output socket in S165M.

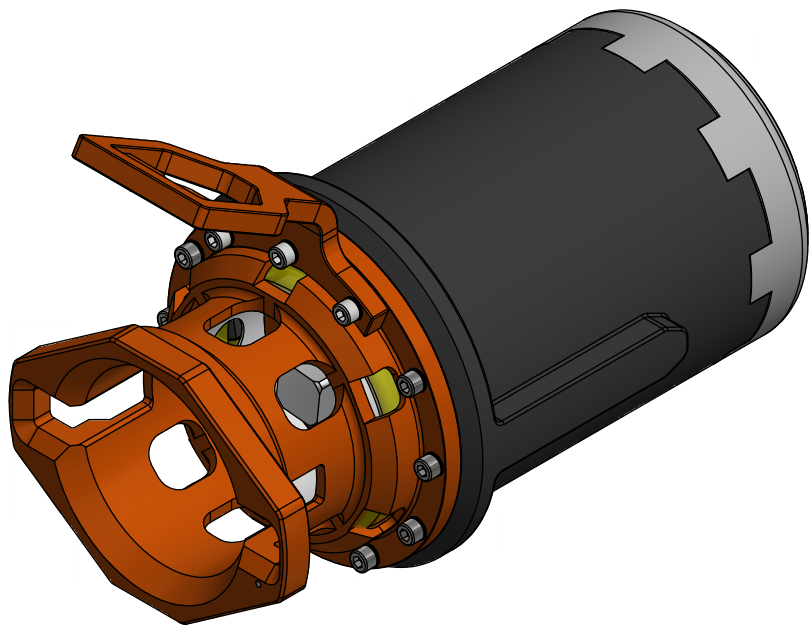
Mechanical Gear box with ISO Class 4 input and
ISO Class 7 output. 10kNm torque capacity.
Gear Ratio 10kNm 1:3,78

Can be configured to 15kNm and 40kNm torque output.
Gear Ratio 15kNm 1:6 (ref BA6847)
Gear Ratio 40kNm 1:14.273 (ref BA6403)

Gear Ratio 40kNm Long 1:14.273 (ref BB1677)



CLASS 6 INSERT BB1680



06	20.9.2023	9-IFU (Issued for Use)		WTJ	LGH	WTJ		Dwg Scale: NTS	Drawing title: Class 7 Gear Box 10kNm	Drawing number: BA8497	Rev. 06
05	24.8.2022	9-IFU (Issued for Use)		WTJ	LGH	WTJ		Dwg Proj: 			
04	11.2.2022	9-IFU (Issued for Use)		WTJ	KHA	WTJ		Dwg Format: A3			
03	27.10.2021	9-IFU (Issued for Use)		WTJ	LGH	WTJ					
Rev.	Date	Reason for issue	Revision change	Made	Chk'd	Appr.					