

NOTE: 1  
DESIGN CODE:  
API 17H

NOTE: 2  
TECHNICAL CLASSIFICATION:  
Article Type: 008-Actuation  
Main Group: 8.03. ISO-6-7 Actuation  
Intermediate Group: 8.46.03. Gear  
Sub Group: 8.46.128.02. Intervention

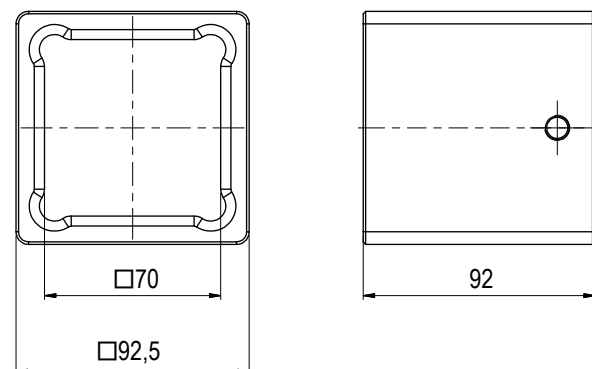
NOTE: 3  
INTERFACE INFORMATION:  
Pressure Rating Bar: 300  
Design Water Depth: 3000m  
Material: N/A  
Weight in Air: 62,7 kg  
Volume: 12,83 dm<sup>3</sup>  
Submerged Weight: 49,59 kg  
Surface Area: 26052 cm<sup>2</sup>  
Hydraulic: N/A  
Mechanical: ISO Class 4 Input  
Electrical: N/A  
Com. & Protocol: N/A

NOTE: 4  
ADDITIONAL INFORMATION:  
API 17H Class 4 to 7 gearbox for short term use / intervention.  
The gearbox is oil filled and pressure compensated using passive, integrated compensator. Main housing constructed in hard anodized Aluminum, nose section in POM and output socket in S165M.

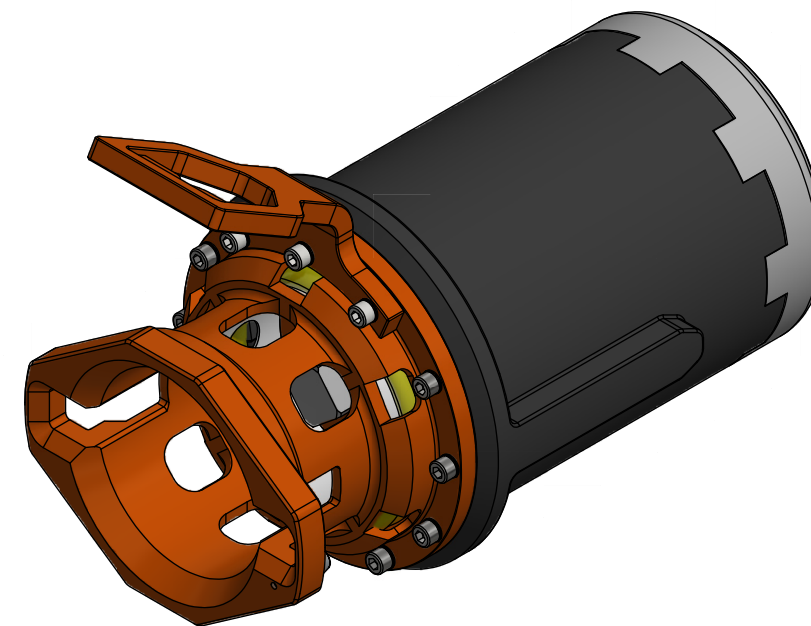
Mechanical Gear box with ISO Class 4 input and  
ISO Class 7 output. 15kNm torque capacity.  
Gear Ratio 15kNm 1:6

Can be configured to 10kNm and 40kNm torque output.  
Gear Ratio 10kNm 1:3,78 (ref BA8497)  
Gear Ratio 40kNm 1:14.273 (ref BA6403)

Gear Ratio 40kNm Long 1:14.273 (ref BB1677)



CLASS 6 INSERT BB1680



10	20.9.2023	9-IFU (Issued for Use)		WTJ	LGH	WTJ
09	24.8.2022	9-IFU (Issued for Use)		WTJ	LGH	WTJ
08	11.2.2022	9-IFU (Issued for Use)		WTJ	KHA	WTJ
07	26.8.2021	9-IFU (Issued for Use)		WTJ	LGH	WTJ
Rev.	Date	Reason for issue	Revision change	Made	Chk'd	Appr.

**BLUE LOGIC**

Dwg Scale:  
NTS  
Dwg Proj:  
Dwg Format:  
A3

Drawing title:  
Class 7 Gear Box 15kNm

Drawing number:  
BA6847

Rev.  
10