

NOTE: 1
DESIGN CODE:
API 17H

NOTE: 2
TECHNICAL CLASSIFICATION:
Article Type: 008-Actuation
Main Group: 8.03. ISO-6-7 Actuation
Intermediate Group: 8.46.03. Gear
Sub Group: 8.46.128.02. Intervention

NOTE: 3
INTERFACE INFORMATION:
Pressure Rating Bar: 300
Design Water Depth: 3000m
Material: N/A
Weight: 71,1 kg
Volume: 13,84 dm³
Submerged Weight: 56,93 kg
Surface Area: 30658 cm²
Hydraulic: N/A
Mechanical: ISO Class 4 Input
Electrical: N/A
Com. & Protocol: N/A

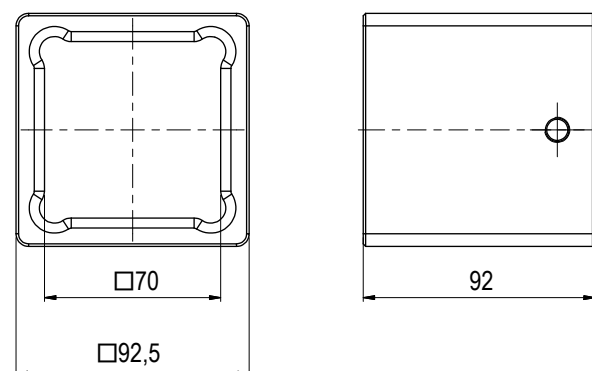
NOTE: 4
ADDITIONAL INFORMATION:
API 17H Class 4 to 7 gearbox for short term use / intervention.
The gearbox is oil filled and pressure compensated using passive, integrated compensator. Main housing constructed in hard anodized Aluminum, nose section in POM and output socket in S165M.

Mechanical Gear box with ISO Class 4 input and
ISO Class 7 output. 40kNm torque capacity.
Gear Ratio 40kNm 1:14.273

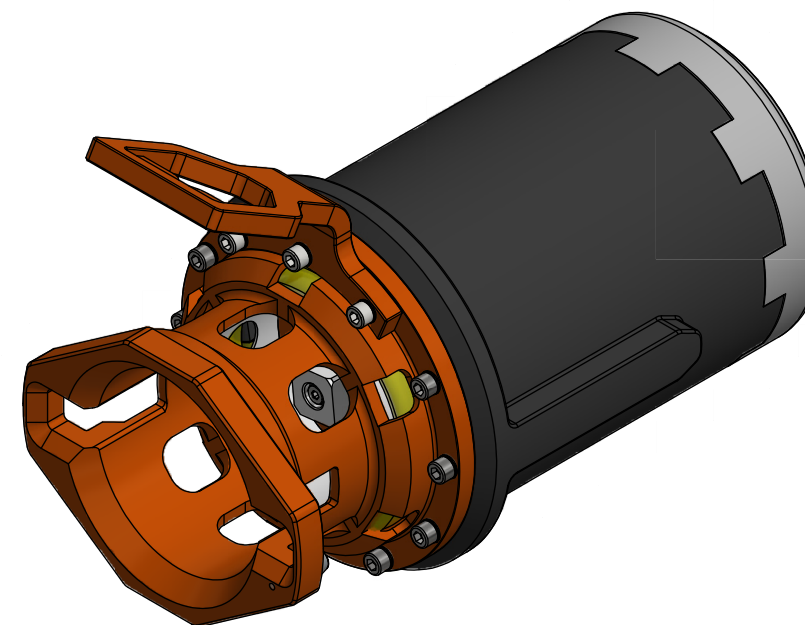
Class 6 Insert available on request, BB1680

Can be configured to 10kNm and 15kNm torque output.
Gear Ratio 15kNm 1:6 (ref BA6847)
Gear Ratio 10kNm 1:3,78 (ref BA8497)

Gear Ratio 40kNm Long 1:14.273 (ref BB1677)



CLASS 6 INSERT BB1680



12	20.9.2023	9-IFU (Issued for Use)		WTJ	LGH	WTJ
11	24.8.2022	9-IFU (Issued for Use)		WTJ	LGH	WTJ
10	11.2.2022	9-IFU (Issued for Use)		WTJ	KHA	WTJ
09	26.8.2021	9-IFU (Issued for Use)		WTJ	LGH	WTJ
Rev.	Date	Reason for issue	Revision change	Made	Chk'd	Appr.

BLUE LOGIC

Dwg Scale:
NTS
Dwg Proj:
Dwg Format:
A3

Drawing title:
Class 7 Gear Box 40kNm

Drawing number:
BA6403

Rev.
12