

NOTE: 1  
DESIGN CODE:  
API 17H

NOTE: 2  
TECHNICAL CLASSIFICATION:  
Article Type: 008-Actuation  
Main Group: 8.03. ISO-6-7 Actuation  
Intermediate Group: 8.46.03. Gear  
Sub Group: 8.46.128.02. Intervention

NOTE: 3  
INTERFACE INFORMATION:  
Pressure Rating Bar: 300  
Design Water Depth: 3000m  
Material: N/A  
Weight: 93,9 kg  
Volume: 19,47 dm<sup>3</sup>  
Submerged Weight: 73,96 kg  
Surface Area: 36654 cm<sup>2</sup>  
Hydraulic: N/A  
Mechanical: ISO Class 4 Input  
Electrical: N/A  
Com. & Protocol: N/A

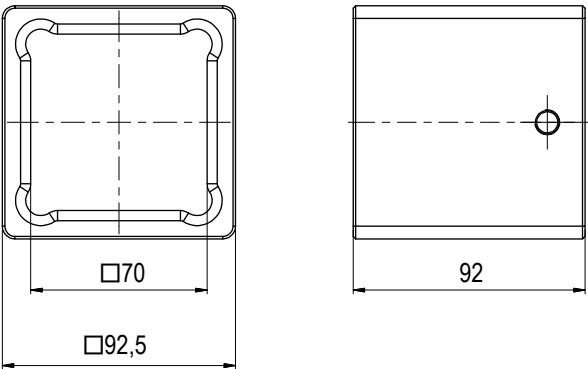
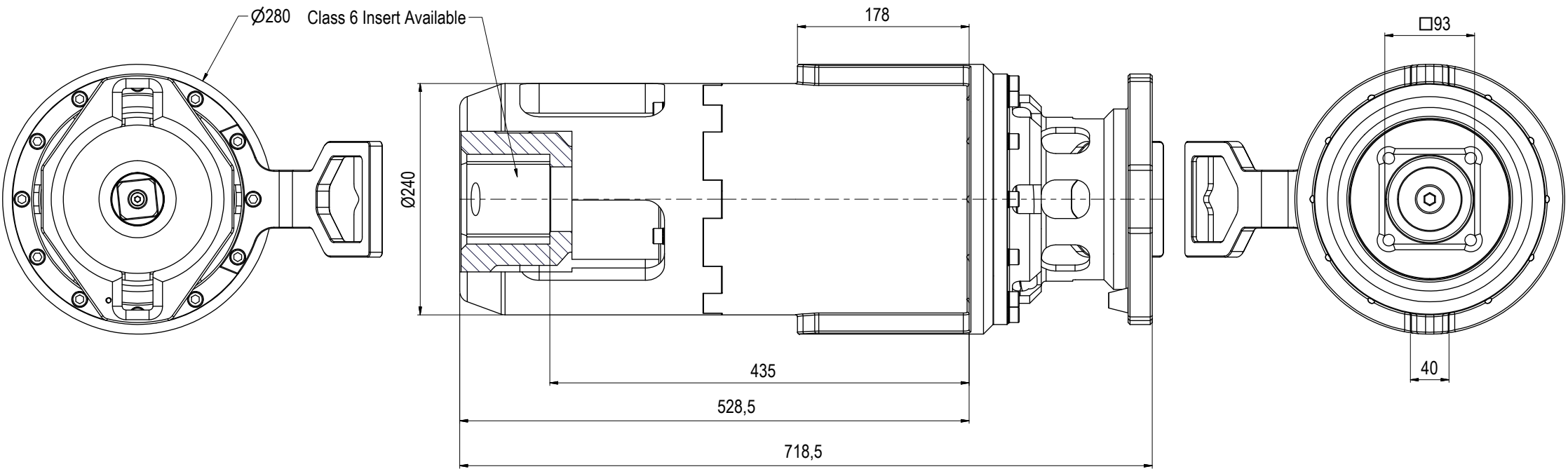
NOTE: 4  
ADDITIONAL INFORMATION:  
API 17H Class 4 to 7 gearbox short term use / intervention.  
The gearbox is oil filled and pressure compensated using passive integrated compensator. Main housing constructed in hard anodized Aluminum, nose section in POM and output socket in S165M.

Mechanical Gear box with ISO Class 4 input and  
ISO Class 7 output. 40kNm torque capacity.  
Gear Ratio 40kNm 1:14.273

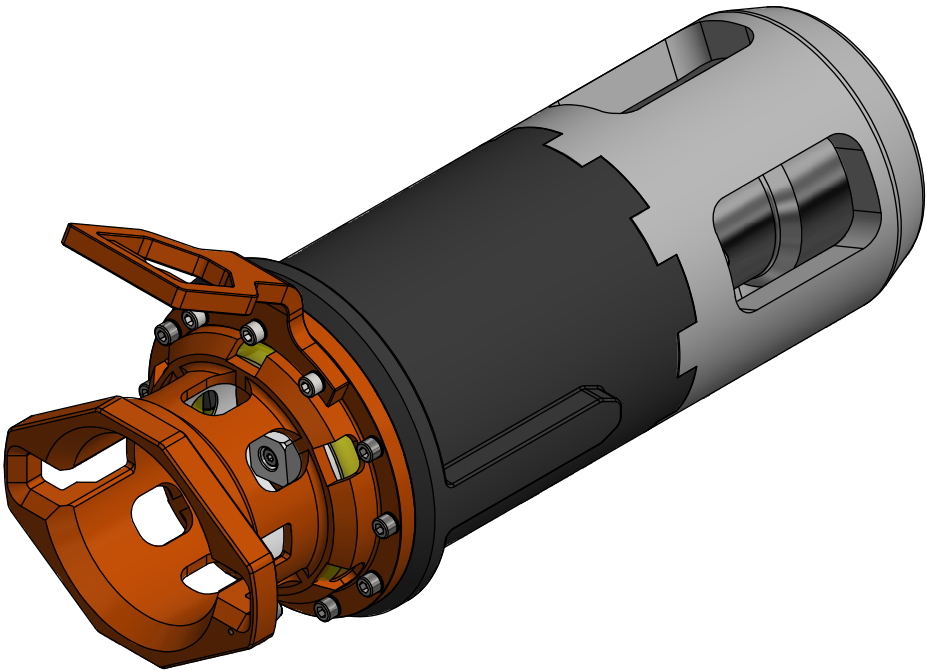
Class 6 Insert available on request, BB1680

Can be configured to 10kNm and 15kNm torque output.  
Gear Ratio 15kNm 1:6  
Gear Ratio 10kNm 1:3,78

Gear Ratio 10kNm Short 1:3,78 (ref BA8497)  
Gear Ratio 15kNm Short 1:6 (ref BA6847)  
Gear Ratio 40kNm Short 1:14.273 (ref BA6403)



CLASS 6 INSERT BB1680



07	20.9.2023	9-IFU (Issued for Use)		WTJ	LGH	WTJ	Dwg Scale:	NTS	Drawing title:	Class 7 Gear Box 40kNm Long		
06	24.8.2022	9-IFU (Issued for Use)		WTJ	LGH	WTJ	Dwg Proj:					
05	11.2.2022	9-IFU (Issued for Use)		WTJ	KHA	WTJ	Dwg Format:	A3				
04	7.7.2021	9-IFU (Issued for Use)		WTJ	LGH	WTJ						
Rev.	Date	Reason for issue	Revision change	Made	Chk'd	Appr.			Drawing number:	BB1677		Rev. 07