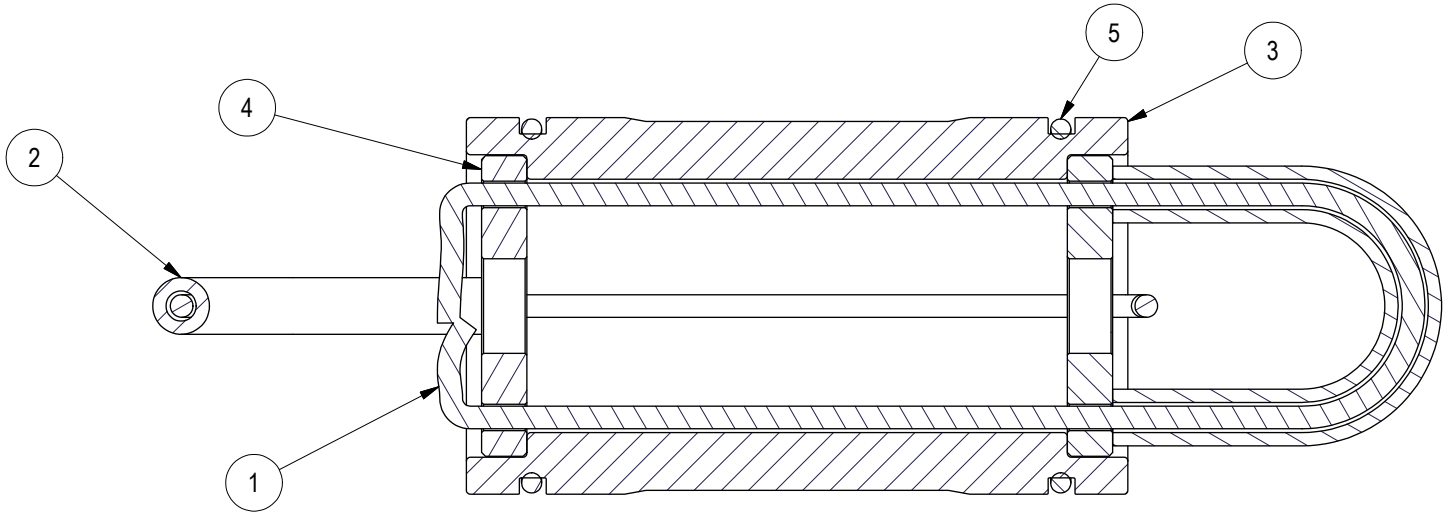
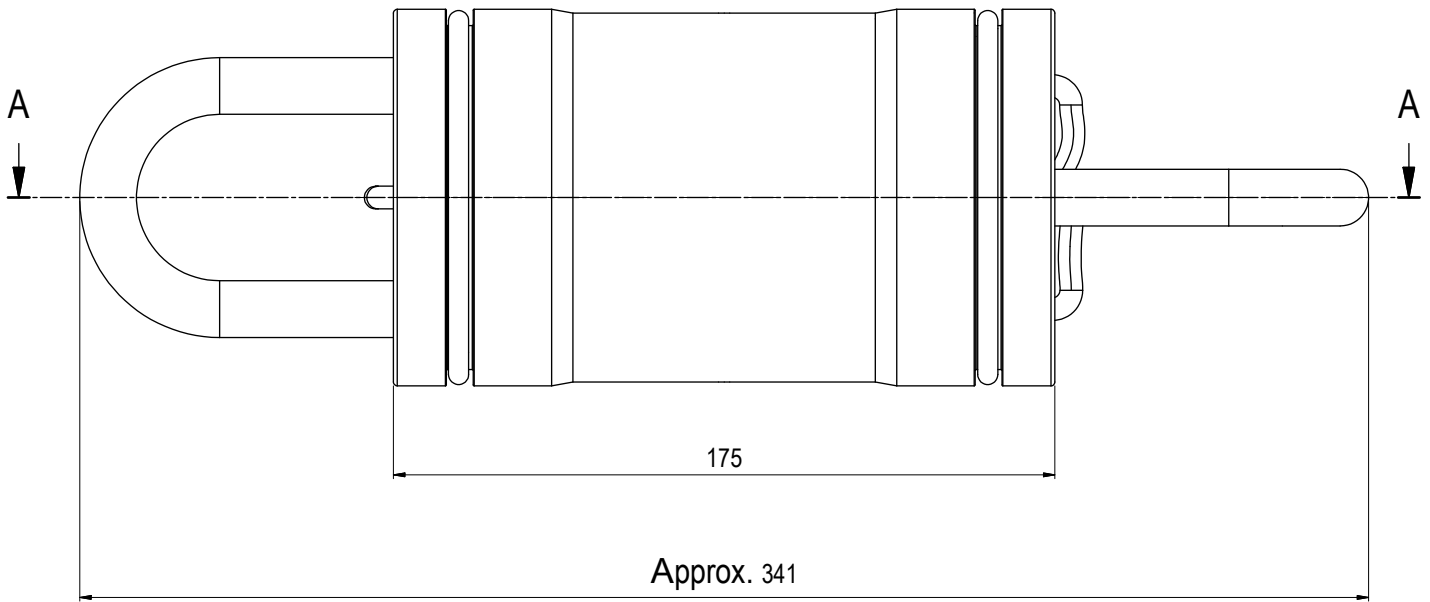
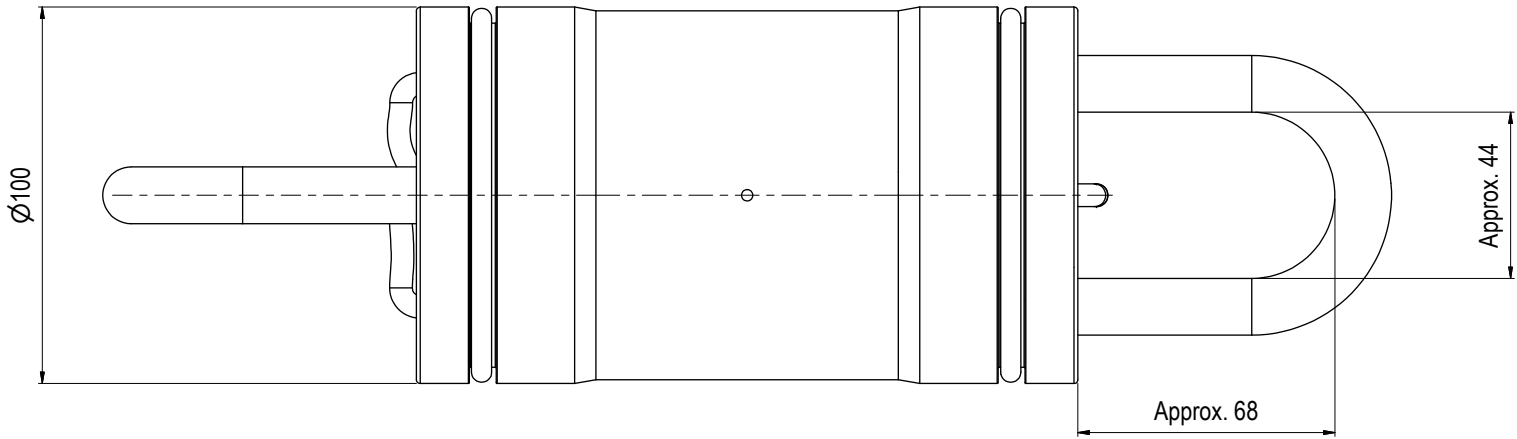


Parts List			
ITEM	QTY	PART No.	DESCRIPTION
1	2	101381	101381 Nylon Rope Ø6mm L=600
2	2	101382	101382 Propanslange EN559 ID:8mm OD:14mm
3	1	BA6358	Ø100 SP Prot VStab Body
4	2	BA6034	End plate Ø100 press stab
5	2	100291	O-Ring BS341 D1=88,27 D2=5,33 NBR

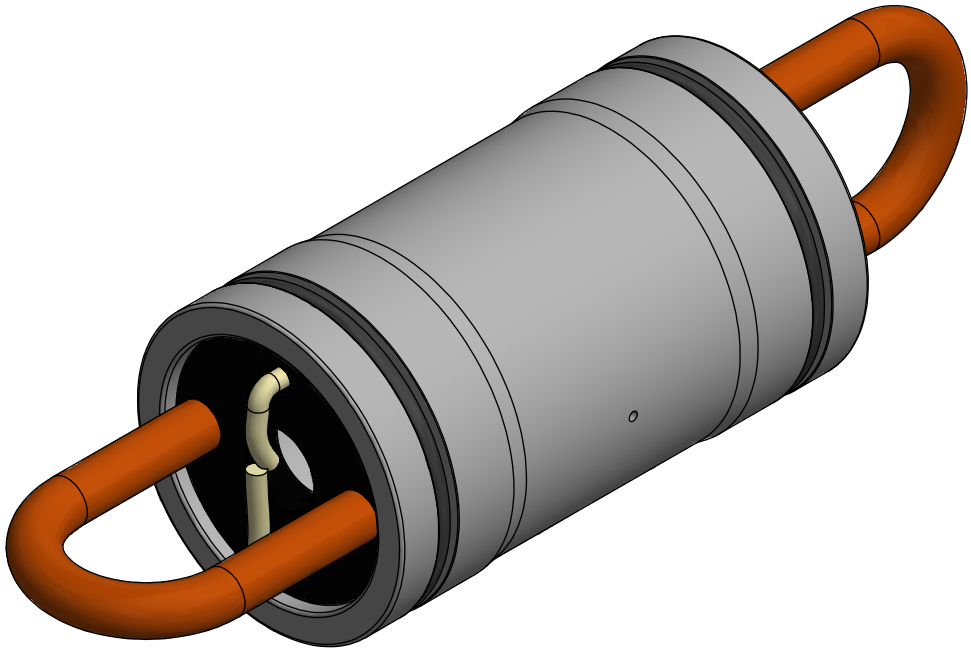


SECTION A-A

NOTE: 1
DESIGN CODE:
N/A

NOTE: 2
TECHNICAL CLASSIFICATION:
Article Type: 003-Valve Stabs
Main Group: 3.05. Ø100-Valvestab
Intermediate Group: 3.35.03. Protection
Sub Group: 3.35.168.1. Single

NOTE: 3
INTERFACE INFORMATION:
Pressure Rating Bar: Vented
Design Water Depth:
Material: Long-term
Weight in Air: 0,9 kg
Volume: 0,85 dm^3
Submerged Weight: 0 kg
Surface Area: 1922 cm^2
Hydraulic: N/A
Mechanical: N/A
Electrical: N/A
Com. & Protocol: N/A



04	7.11.2022	9-IFU (Issued for Use)		WTJ	HNJ	WTJ	<div><div>BLUE LOGIC</div><div>This Drawing is the Property of Blue Logic AS © and must Not be Loaned, Reproduced or Transferred to others without written Permission</div></div>	Dwg Scale: NTS	Drawing title: Ø100 SP Prot VStab Vented Long-term Dual Entry	Drawing number: BA6357	Rev. 04
03	12.8.2015	9-IFU (Issued for Use)		WTJ	HNJ	WTJ		Dwg Proj: 			
02	5.8.2015	9-IFU (Issued for Use)		WTJ	LGH	WTJ		Dwg Format: A3			
01	13.2.2015	2-IFT (Issued for Tender)		WTJ	LGH	WTJ					
Rev.	Date	Reason for issue	Revision change	Made	Chk'd	Appr.					