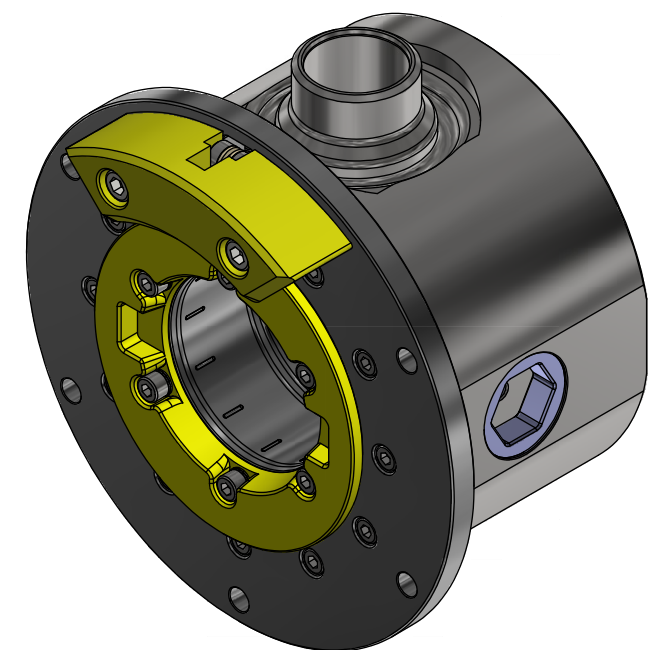


NOTE: 1
DESIGN CODE:
API 17D
API 6A

NOTE: 2
TECHNICAL CLASSIFICATION:
Article Type: 003-Valve Stabs
Main Group: 3.05. Ø100-Valvestab
Intermediate Group: 3.35.02. Receptacle
Sub Group: 3.35.77.1. Single

NOTE: 3
INTERFACE INFORMATION:
Pressure Rating Bar: 345
Design Water Depth: 3000
Material: Long-term
Weight: 41 kg
Volume: 5,3 dm³
Submerged Weight: 35,58 kg
Surface Area: 8016 cm²
Hydraulic: Weld Neck 2" Sch 80
Mechanical: N/A
Electrical: N/A
Com. & Protocol: N/A

NOTE: 4
ADDITIONAL INFORMATION:
Ø100 Valve Stab Receptacle in Super Duplex with 2" weld neck designed for long-term subsea installation, pressure rated for 5000Psi. Integrated isolation valve operated in conjunction with Valve Stab ensure no spill of fluid or water ingress during connection/disconnection. This is perfect for RFO intervention point during project installation or during project operation if you need to purge with MEG or Nitrogen before pulling a SPS module. It is possible to pump MEG and Pressure cavity between valve barriers, to system pressure, to eliminate ingress of hydrocarbons an formation of Hydrates.



05	3.3.2023	7-IFC (Issued for Construction)		HNJ	TAN	HNJ
04	4.11.2022	7-IFC (Issued for Construction)		HNJ	TAN	HNJ
03	8.6.2022	7-IFC (Issued for Construction)		WTJ	LGH	WTJ
02	25.3.2022	7-IFC (Issued for Construction)		HNJ	LGH	HNJ
Rev.	Date	Reason for issue	Revision change	Made	Chk'd	Appr.

BLUE LOGIC

Dwg Scale:
NTS
Dwg Proj:
Dwg Format:
A3

Drawing title:
Ø100 SP VStab Rec 5k Long-term 2" WN Sch 80

Drawing number:
BB2801

Rev.
05