

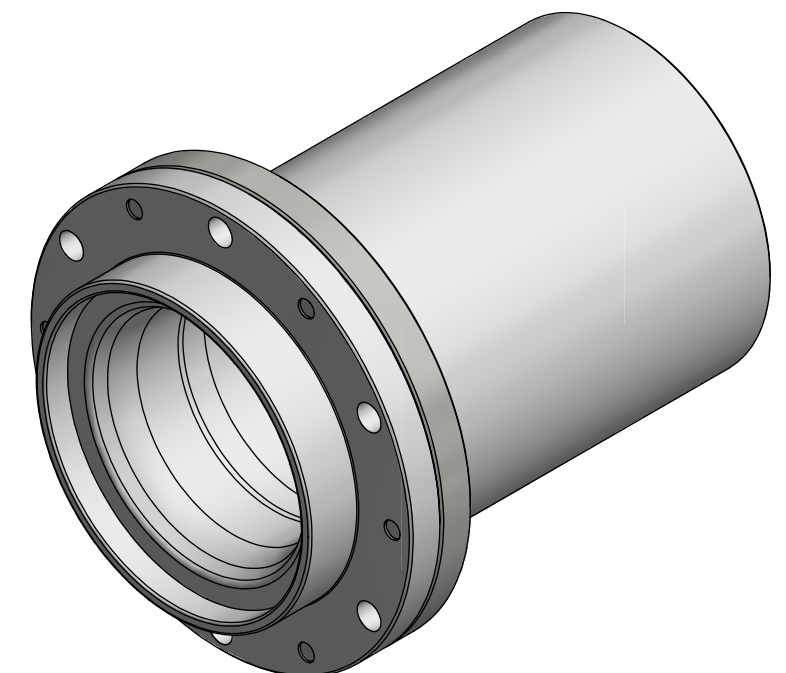
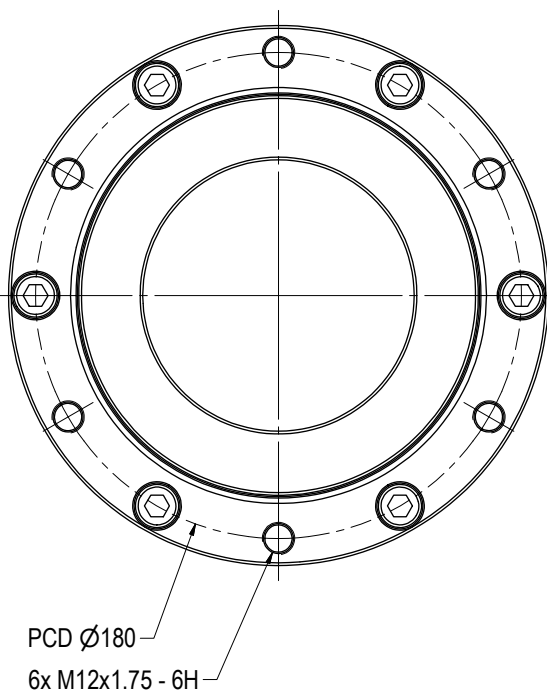
NOTE: 1
DESIGN CODE:
N/A

NOTE: 2
TECHNICAL CLASSIFICATION:
Article Type: 003-Valve Stabs
Main Group: 3.05. Ø100-Valvestab
Intermediate Group: 3.35.02. Receptacle
Sub Group: 3.35.77.3. Triple

NOTE: 3
INTERFACE INFORMATION:
Pressure Rating Bar: N/A
Design Water Depth: 3000m
Material: Intervention
Weight: 3,8 kg
Volume: 2,48 dm³
Submerged Weight: 1,3 kg
Surface Area: 2996 cm²
Hydraulic: N/A
Mechanical: 6xM12 @PCD Ø180mm
Electrical: N/A
Com. & Protocol: N/A

NOTE: 4
ADDITIONAL INFORMATION:
The Blue Logic Valve Stab Parking Receptacle (VStab Park Rec) is part of Blue Logic's Ø100 Valve Stab program. It is used as a parking position for male VStabs in the Ø100 program. Recommended to be installed vertically with entrance facing upwards.

Note: Non Pressure retaining, all ports ventilated with Ø4mm Holes.



03	8.4.2019	9-IFU (Issued for Use)		WTJ	LGH	WTJ
02	14.12.2018	9-IFU (Issued for Use)	Change of Approval Status	WTJ	HNJ	LGH
01	4.10.2018	2-IFT (Issued For Tender)	For Review	WTJ	LGH	WTJ
Rev.	Date	Reason for issue	Revision change	Made	Chk'd	Appr.

BLUE LOGIC

Dwg Scale:
NTS
Dwg Proj:
Dwg Format:
A3

Drawing title:
Ø100 TP VStab Park Rec Interv

Drawing number:
BB2537

Rev.
03