

NOTE: 1
DESIGN CODE:
N/A

NOTE: 2
TECHNICAL CLASSIFICATION:
Article Type: 001-Hotstabs
Main Group: 1.09. Valves-Hotstab
Intermediate Group: 1.6.3. 8-15mm
Sub Group: 1.6.23.1. 1-way

NOTE: 3

INTERFACE INFORMATION:

Pressure Rating Bar: 2

Material:	Intervention
Weight:	0 kg
Volume:	1,2 cm ³
Surface Area:	19 cm ²
Hydraulic:	M17x1
Mechanical:	N/A
Electrical:	N/A
Com. & Protocol:	N/A

NOTE: 4

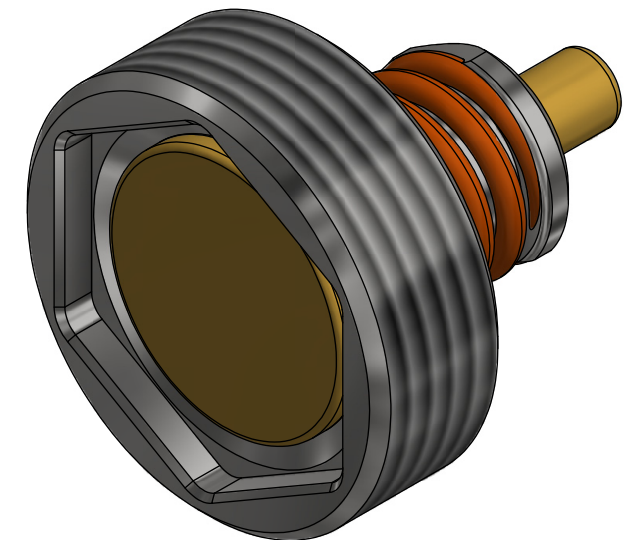
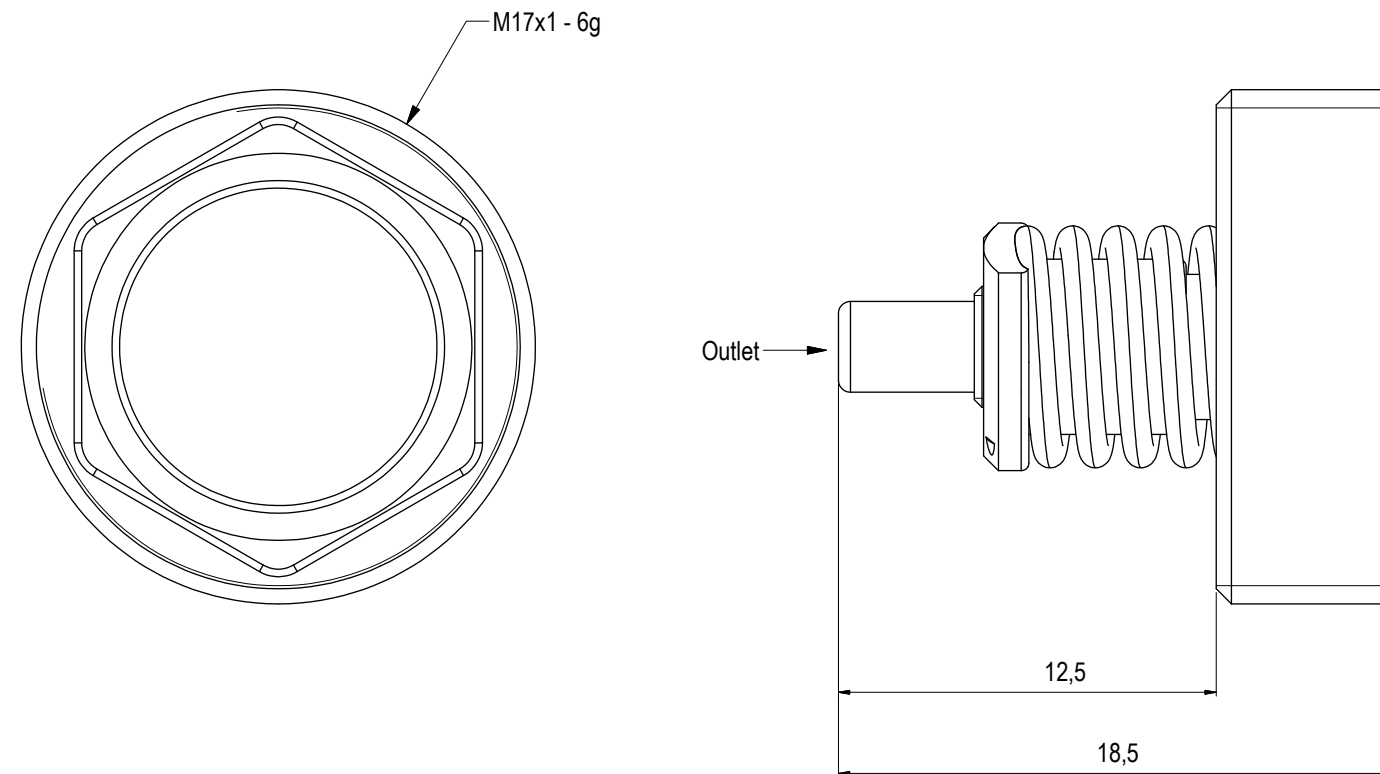
ADDITIONAL INFORMATION:

One Way Check Valves has metal to metal seals and spring set to open at 2Bar.


In order to prevent jamming of Stab in Receptacle the threads has been inserted with Loctite.

Change of Valves is NOT recommended to be done Offshore without proper training.

Stabs to be returned to Blue Logic for service of Check Valves.

[illegible]

BLUE LOGIC 

Dwg. Scale: NTS		Drawing title: One Way Check Valve Outlet 2Bar	
Dwg Proj: 			
Dwg Format: A3			
		Drawing number: PA0448	Rev. 03