

NOTE: 2  
TECHNICAL CLASSIFICATION:  
Article Type: 001-Hot Stabs  
Main Group: 1.09. Valves Hot Stab  
Intermediate Group: 1.6.02. 5-8mm  
Sub Group: 1.6.22.01. 1-way

**NOTE: 4**

**ADDITIONAL INFORMATION:**

The check valves are designed with metal to metal sealing, and are not 100% leak free. A leak rate of 10 drops/minute are acceptable.

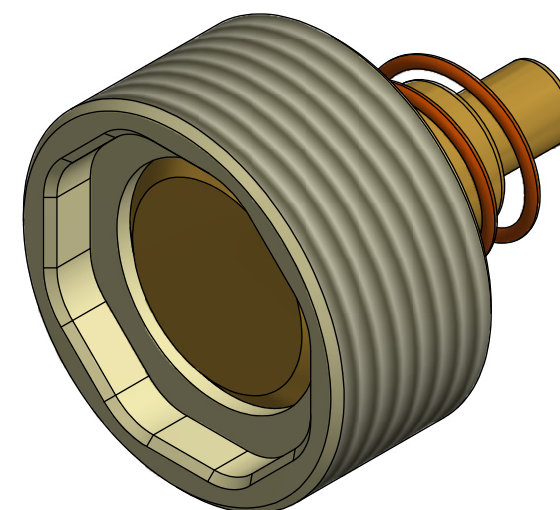
Cracking pressure approx. 0,5 Bar

In order to prevent jamming of Stab in Receptacle the threads has been inserted with Loctite.

Change of Valves is NOT recommended to be done Offshore without proper training.

Stabs to be returned to Blue Logic for service of Check Valves.

The technical drawing consists of two views of a valve assembly. The top view (left) shows a circular component with a central circular opening and an outer ring with eight rectangular slots. A leader line points to the outer ring with the text "M12x0.75 - 6g". The side view (right) shows the assembly from the side, including a cylindrical inlet pipe, a coiled spring, and a rectangular valve body. Dimension lines indicate a length of 8 for the spring section and a total length of 14 for the assembly. An arrow labeled "Inlet" points to the inlet pipe.

[illegible]