

NOTE: 2
TECHNICAL CLASSIFICATION:
Article Type: 001-Hot Stabs
Main Group: 1.09. Valves Hot Stub
Intermediate Group: 1.6.03. 8-15mm
Sub Group: 1.6.23.01. 1-way

NOTE: 4

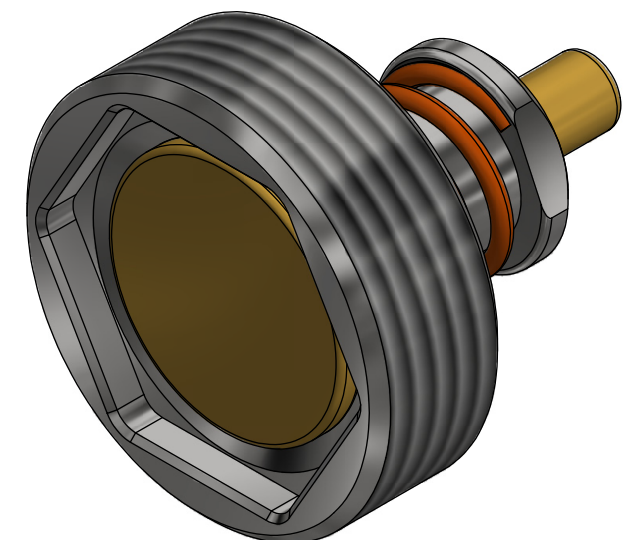
ADDITIONAL INFORMATION:

One Way Check Valves has metal to metal seals and spring set to open at 0,5Bar.

In order to prevent jamming of Stab in Receptacle the threads has been inserted with Loctite.

Change of Valves is NOT recommended to be done Offshore without proper training.

Stabs to be returned to Blue Logic for service of Check Valves.

[illegible]