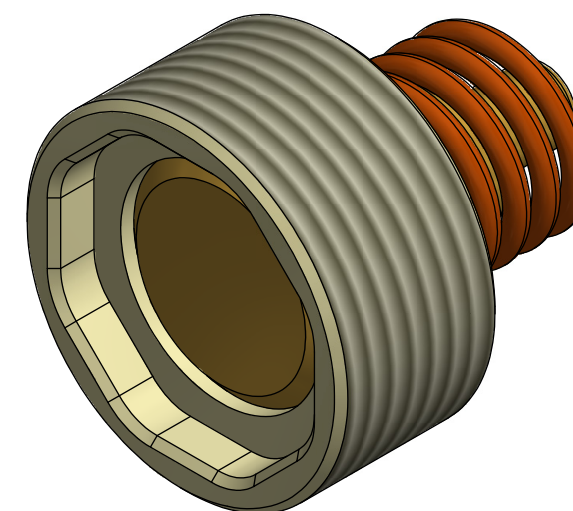


NOTE: 1
DESIGN CODE:
N/A

NOTE: 2
TECHNICAL CLASSIFICATION:
Article Type: 001-Hot Stabs
Main Group: 1.09. Valves Hot Stab
Intermediate Group: 1.6.02. 5-8mm
Sub Group: 1.6.22.01. 1-way

NOTE: 3
INTERFACE INFORMATION:
Pressure Rating Bar: 2
Material: Intervention
Weight: 0 kg
Volume: 0 dm^3
Surface Area: 10 cm^2
Hydraulic: M12x0,75
Mechanical: N/A
Electrical: N/A
Com. & Protocol: N/A

NOTE: 4
ADDITIONAL INFORMATION:
One Way Check Valves has metal to metal seals and spring set to open at 2Bar.
In order to prevent jamming of Stab in Receptacle the threads has been inserted with Loctite.
Change of Valves is NOT recommended to be done Offshore without proper training.
Stabs to be returned to Blue Logic for service of Check Valves.



02	25.11.2021	9-IFU (Issued for Use)		WTJ	HNJ	WTJ
01	5.9.2014	9-IFU (Issued for Use)		WTJ	HNJ	WTJ
Rev.	Date	Reason for issue	Revision change	Made	Chk'd	Appr.



Dwg Scale: NTS	Drawing title: One Way Check Valve Inlet 2Bar	
Dwg Proj: A3		
Dwg Format: A3	Drawing number: BA5565	Rev. 02