

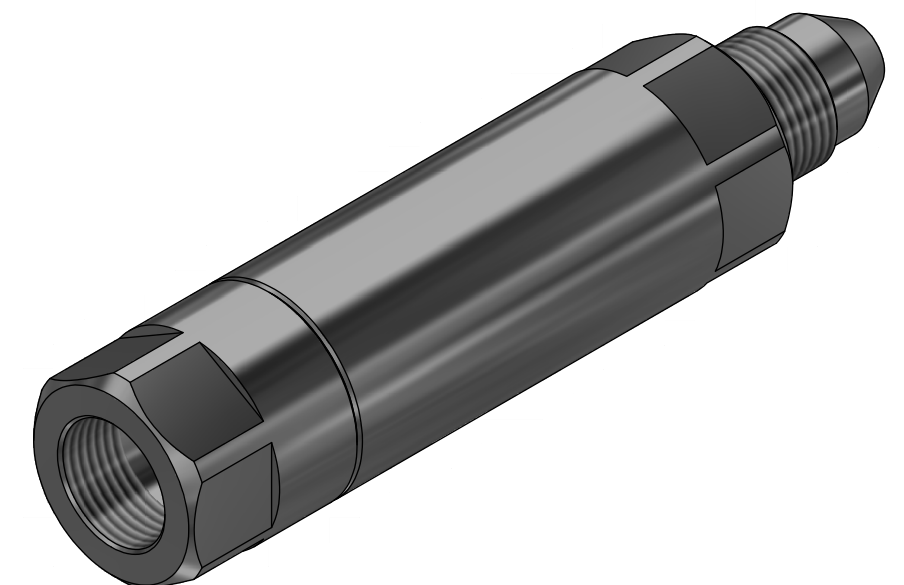
NOTE: 1
DESIGN CODE:
NA

NOTE: 2
TECHNICAL CLASSIFICATION:
Article Type: 001-Hot Stabs
Main Group: 1.09. Valves Hot Stab
Intermediate Group: 1.6.02. 5-8mm
Sub Group: 1.6.22.02. 2-way

NOTE: 3
INTERFACE INFORMATION:
Pressure Rating Bar: 1380
Design Water Depth: 3000m
Material: Intervention
Weight in Air: 0,7 kg
Volume: 0,09 dm³
Submerged Weight: 0,58 kg
Surface Area: 375 cm²
Hydraulic: MP 9/16"
Mechanical: N/A
Electrical: N/A
Com. & Protocol: N/A

NOTE: 4
ADDITIONAL INFORMATION:
Opening Pressure Outlet Approx: 2,0 Bar
Opening Pressure Inlet Approx: 0,5 Bar

Only for Fluid



01	6.12.2021	7-IFC (Issued for Construction)		WTJ	LGH	HNJ
Rev.	Date	Reason for issue	Revision change	Made	Chk'd	Appr.

Dwg Scale: NTS		Drawing title: 2-Way Check Valve 20k Interv MP 9/16"- 2,0-0,5 Bar FM-M	
Dwg Proj:			
Dwg Format: A3		Drawing number: BB5290	Rev. 01