

NOTE: 1
DESIGN CODE:
N/A

NOTE: 2
TECHNICAL CLASSIFICATION:
Article Type: 001-Hot Stabs
Main Group: 1.09. Valves Hot Stab
Intermediate Group: 1.6.02. 5-8mm
Sub Group: 1.6.22.01. 1-way

NOTE: 3

INTERFACE INFORMATION:

Pressure Rating Bar: 6

| | |
|------------------|--------------------|
| Material: | Intervention |
| Weight: | 0 kg |
| Volume: | 0 dm ³ |
| Surface Area: | 14 cm ² |
| Hydraulic: | M12x0,75 |
| Mechanical: | N/A |
| Electrical: | N/A |
| Com. & Protocol: | N/A |

NOTE: 4

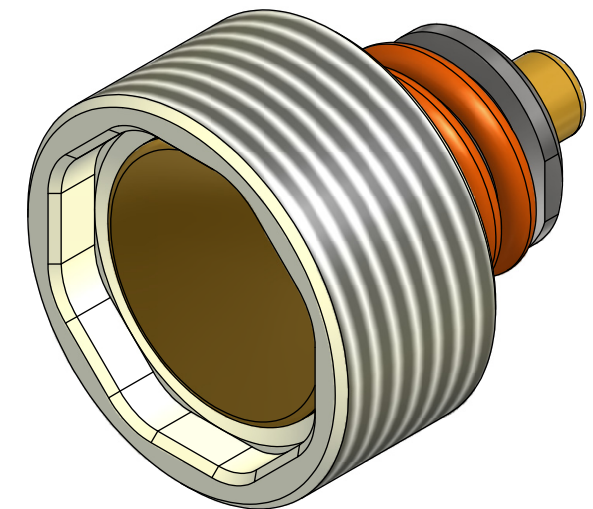
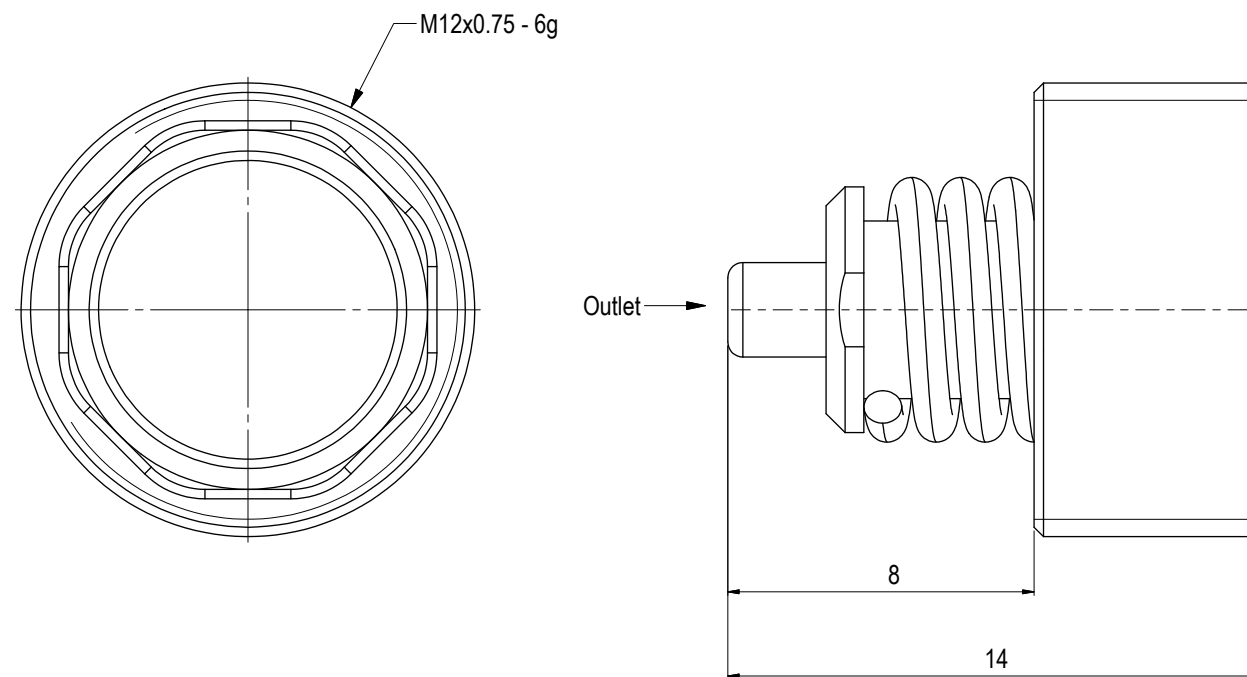
ADDITIONAL INFORMATION:

One Way Check Valves has metal to metal seals and spring set to open at 6Bar.

In order to prevent jamming of Stab in Receptacle the threads has been inserted with Loctite.


Change of Valves is NOT recommended to be done Offshore without proper training.

Stabs to be returned to Blue Logic for service of Check Valves.



| | | | | | | |
|------|------------|------------------------|-----------------|------|-------|--------|
| 03 | 25.11.2021 | 9-IFU (Issued for Use) | | WTJ | HNJ | WTJ |
| 02 | 4.9.2014 | 9-IFU (Issued for Use) | | WTJ | HNJ | WTJ |
| 01 | 2.2.2012 | 9-IFU (Issued for Use) | | LGH | WTJ | LGH |
| Rev. | Date | Reason for issue | Revision change | Made | Chk'd | Appr'd |

BLUE LOGIC 

| | | | |
|--|--|--|-------------------|
| Dwg. Scale: NTS | | Drawing title: One Way Check Valve Outlet 6Bar | |
| Dwg Proj:  | | | |
| Dwg Format: A3 | | | |
| | | Drawing number: BA2244 | Rev. 03 |