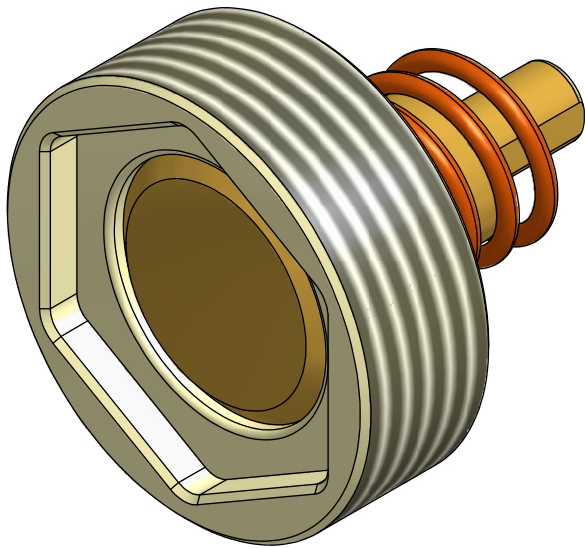
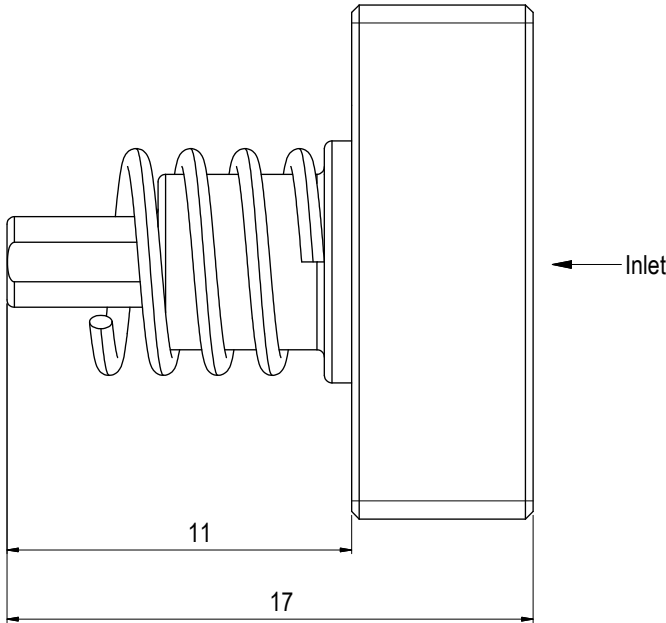
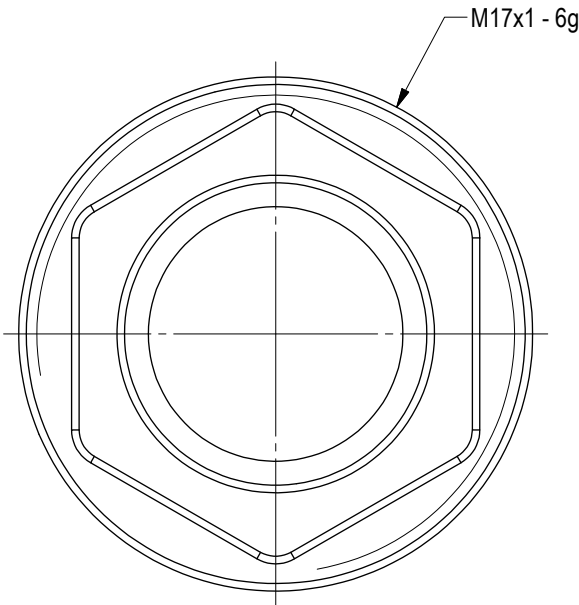


NOTE: 1
DESIGN CODE:
N/A

NOTE: 2
TECHNICAL CLASSIFICATION:
Article Type: 001-Hotstabs
Main Group: 1.09. Valves-Hotstab
Intermediate Group: 1.6.3. 8-15mm
Sub Group: 1.6.23.1. 1-way

NOTE: 3
INTERFACE INFORMATION:
Pressure Rating Bar: 0,5
Material: N/A
Weight: 0 kg
Volume: 1,2 cm^3
Surface Area: 15 cm^2
Hydraulic: M17x1
Mechanical: N/A
Electrical: N/A
Com. & Protocol: N/A

NOTE: 4
ADDITIONAL INFORMATION:
One Way Check Valves has metal to metal seals and spring set to open at 0,5Bar.
In order to prevent jamming of Stab in Receptacle the threads has been inserted with Loctite.
Change of Valves is NOT recommended to be done Offshore without proper training.
Stabs to be returned to Blue Logic for service of Check Valves.



04	4.9.2014	9-IFU (Issued for Use)		WTJ	LAE	WTJ
03	13.6.2014	7-IFC (Issued for Construction)		WTJ	LAE	WTJ
02	4.10.2011	Issued for Production		LGH	EKJ	LGH
Rev.	Date	Reason for issue	Revision change	Made	Chk'd	Appr.



Dwg Scale:	NTS
Dwg Proj:	
Dwg Format:	A3

Drawing title:	One Way check Valve Inlet 0,5Bar		
Drawing number:	BA1086	Rev.	04