

Weld prep to be done by customer.
HISC calculation for the pipe to pup
interface to be done by customer.
HISC calculation between pup and
body done by Blue Logic.

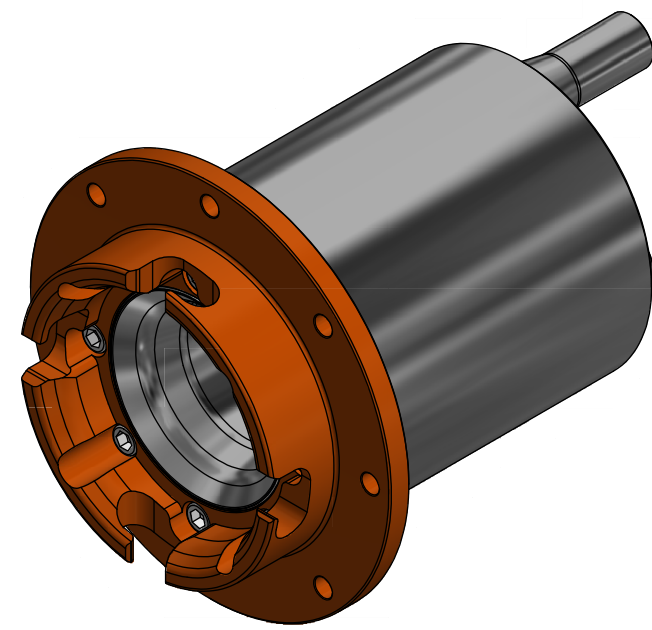
NOTE: 1
DESIGN CODE:
API 17H Type 3

NOTE: 2
TECHNICAL CLASSIFICATION:
Article Type: 001-Hot Stabs
Main Group: 1.10. Ø89 Hot Stab
Intermediate Group: 1.89.02. Receptacle
Sub Group: 1.89.423.02. Dual

NOTE: 3
INTERFACE INFORMATION:
Pressure Rating Bar: 690
Design Water Depth: N/A
Material: Long-term
Weight in Air: 48,9 kg
Volume: 6,23 dm³
Submerged Weight: 42,52 kg
Surface Area: 5085 cm²
Hydraulic: 1" WN Sch 160
Mechanical: N/A
Electrical: N/A
Com. & Protocol: N/A

NOTE 4
NON SPECIFIED TOLERANCES TO BE IN
ACCORDANCE WITH NS-ISO 2768-1M

0,5-3mm	± 0,1
3-6mm	± 0,1
6-30mm	± 0,2
30-120mm	± 0,3
120-400mm	± 0,5
400-1000mm	± 0,8
1000-2000mm	± 1,2
2000-4000mm	± 2,0



NOTE 5
RECEPTACLE TO BE CONNECTED TO CP SYSTEM

NOTE: 6
ADDITIONAL INFORMATION:
Ø89 Dual Port Receptacle designed according to API 17H Type 3 in
Super Duplex (S32760) material suitable for permanent installation. The
Receptacle is pressure rated to 690 Bar / 10 000 Psi. Integrated J-lock to lock the
Stab in position.

NOTE: 7
OPERATION & MAINTENANCE INFORMATION:
600189-TD-0002

Rev.	Date	Reason for issue	Revision change	Made	Chk'd	Appr.
02	4.6.2024	7-IFC (Issued for Construction)		HNJ	PIA	HNJ
01	16.5.2022	7-IFC (Issued for Construction)		WTJ	PIA	HNJ



Dwg Scale: NTS	Dwg Proj: [Symbol]	Dwg Format: A3	Drawing title: Ø89 DP Rec 10k Long-term wJ-L 1" WN Sch 160 8 Holes Interf	Drawing number: BB8195	Rev: 02
-------------------	-----------------------	-------------------	---	---------------------------	------------