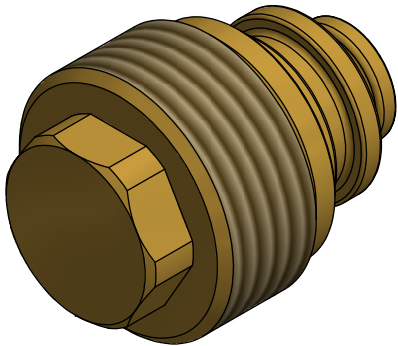


NOTE: 1
DESIGN CODE:
N/A

NOTE: 2
TECHNICAL CLASSIFICATION:
Article Type: 003-Valve Stabs
Main Group: 3.00. Misc-Valvestab
Intermediate Group: 3.40.09. Spares
Sub Group: 3.40.94.2. Receptacle

NOTE: 3
INTERFACE INFORMATION:
Pressure Rating Bar: N/A
Material: UNSC63200 (OM7)
Weight: 0 kg
Volume: 5,1 cm^3
Surface Area: 19 cm^2
Hydraulic: N/A
Mechanical: N/A
Electrical: N/A
Com. & Protocol: N/A



09	12.12.2023	7-IFC (Issued for Construction)		WTJ	LGH	WTJ	<div>BLUE LOGIC</div> <div><div></div></div> <div>This Drawing is the Property of Blue Logic AS © and must Not be Loaned, Reproduced or Transferred to others without written Permission</div>	Unless Noted Otherwise:	Dwg Scale: NTS	Drawing title: Cartridge for Ø55 VStab Rec			
08	29.11.2023	7-IFC (Issued for Construction)		WTJ	LGH	WTJ		Dim. Tol: NS-ISO 2768-1N/A	Dwg Proj: <div><div></div></div>				
07	23.5.2016	7-IFC (Issued for Construction)		WTJ	LGH	WTJ		Roughness: RaN/A	Dwg Format: A3				
06	19.4.2016	7-IFC (Issued for Construction)		LAE	LGH	LAE		Fillet Rad: Corner Rmax: N/A	Break Edges: (R. Alt. 45°) R= 0.1-0.5	Drawing number: BA1946			
Rev.	Date	Reason for issue	Revision change	Made	Chk'd	Appr.		Rev. 09					