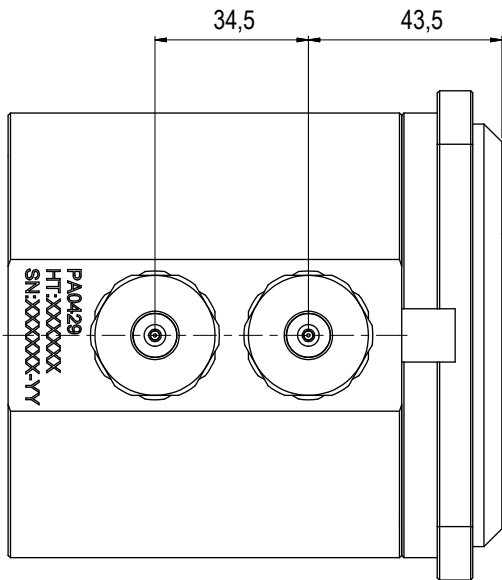
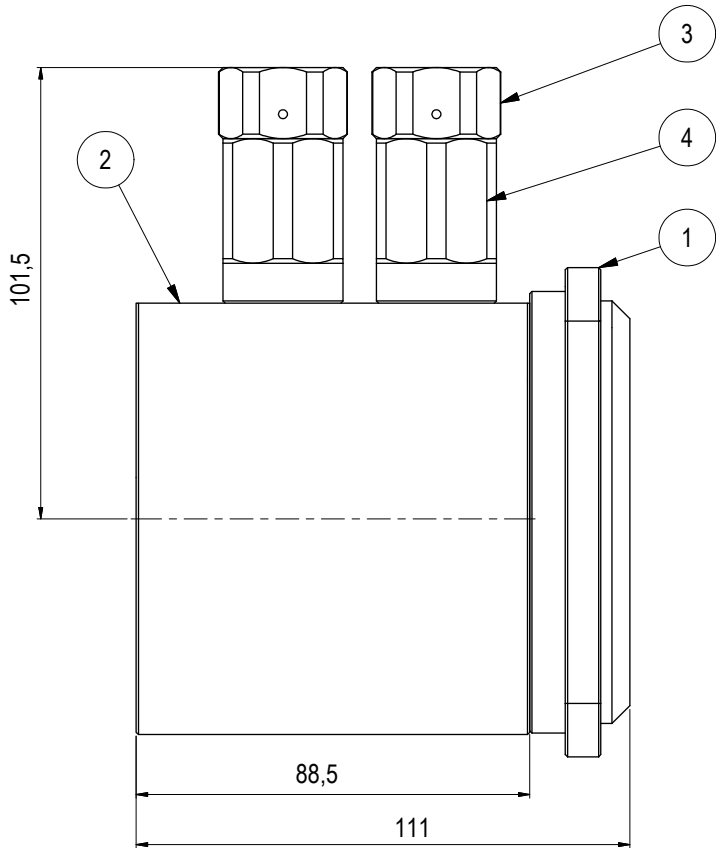
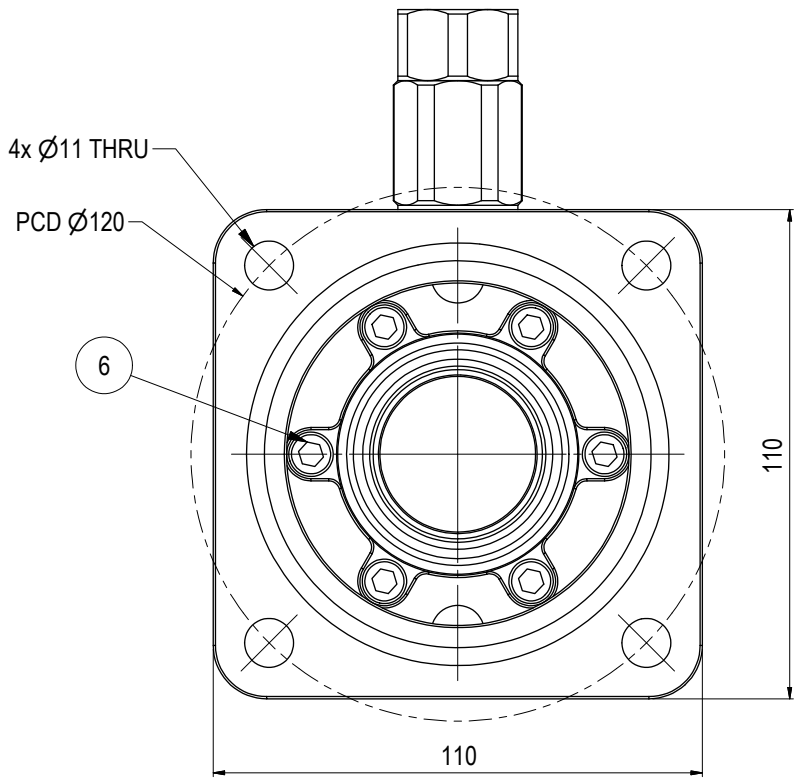


Parts List			
ITEM	QTY	PART No.	TITLE
1	1	PA0441	Adapter Plate with Lock Interface Ø35mm 20k
2	1	PA0429	Ø35 DP Rec 20k Interv BSP 3/8"
3	2	PA0354	Adapter -Autoclave
4	2	PA0219	2-Way Check Valve 20k Interv BSP 3/8" 120 Cone



NOTE: 1  
DESIGN CODE:  
API 17H/6A

NOTE: 2  
TECHNICAL CLASSIFICATION:  
Article Type: 001-Hot Stabs  
Main Group: 1.01. Ø35 Hot Stab  
Intermediate Group: 1.1.02. Receptacle  
Sub Group: 1.1.2.02. Dual

NOTE: 3  
INTERFACE INFORMATION:  
Pressure Rating Bar: 1380  
Design Water Depth: N/A  
Material: Intervention  
Weight: 6,2 kg  
Volume: 0,78 dm^3  
Submerged Weight: 5,35 kg  
Surface Area: 1253 cm^2  
Hydraulic: MP 1/4"  
Mechanical: 6xM6@PCD 66  
Electrical: N/A  
Com. & Protocol: N/A

NOTE: 4  
SPAREPARTS:  
BA5287

NOTE: 5  
ADDITIONAL INFORMATION:  
The Ø35mm Blue Logic Hot Stab is made according to API 17D. This Hot Stab is in general designed for flow up to approx 25 liters pr. munute. We have pressure rating up to PSI 20K or 1380 Bar. The Hot Stab system can also be fitted with an lock-system.

All Blue Logic Receptacles is Standardized with BSP Interface.  
NPT and MP (Autoclave or Similar) Interfaces can be delivered upon request.



08	18.10.2018	9-IFU (Issued for Use)		HNJ	WTJ	HNJ	<div>BLUE LOGIC</div>	Dwg Scale: NTS	Drawing title: Ø35 DP Rec 20k Interv wCV WL MP 1/4"	Drawing number: PA0214	Rev. 08
07	10.6.2015	9-IFU (Issued for Use)		WTJ	HNJ	WTJ		Dwg Proj: 			
06	13.4.2015	9-IFU (Issued for Use)		WTJ	HNJ	WTJ		Dwg Format: A3			
05	3.6.2014	9-IFU (Issued for Use)		WTJ	HNJ	WTJ					
Rev.	Date	Reason for issue	Revision change	Made	Chk'd	Appr.					