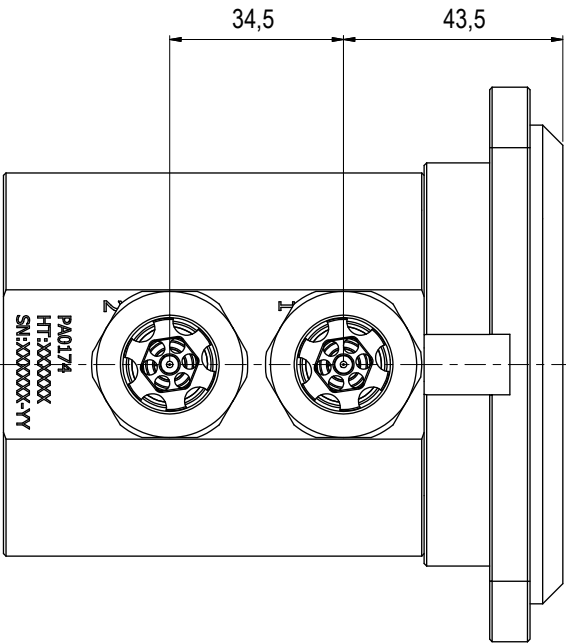
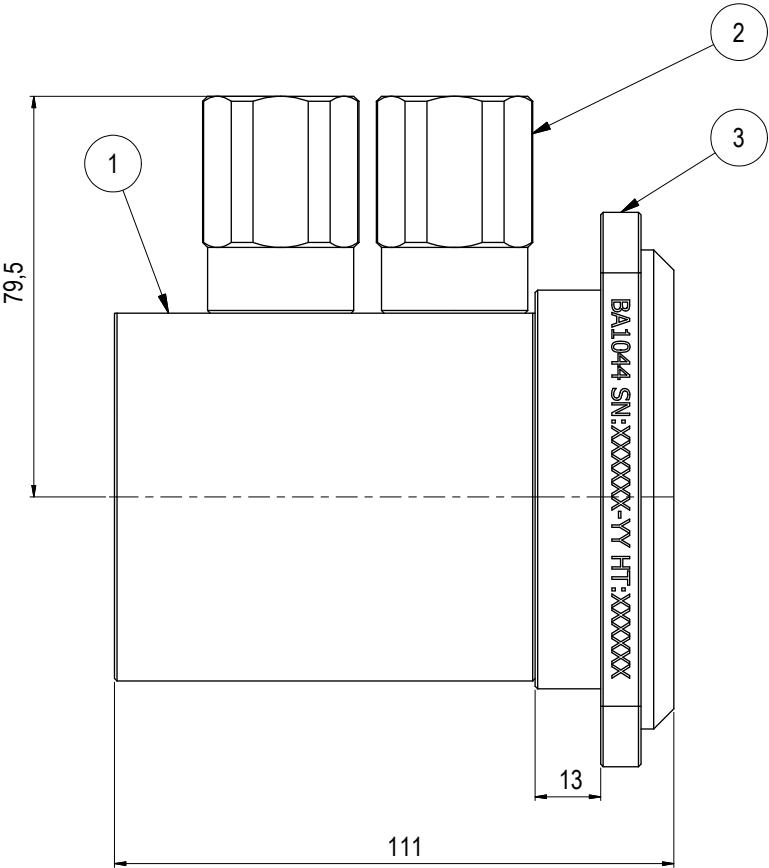
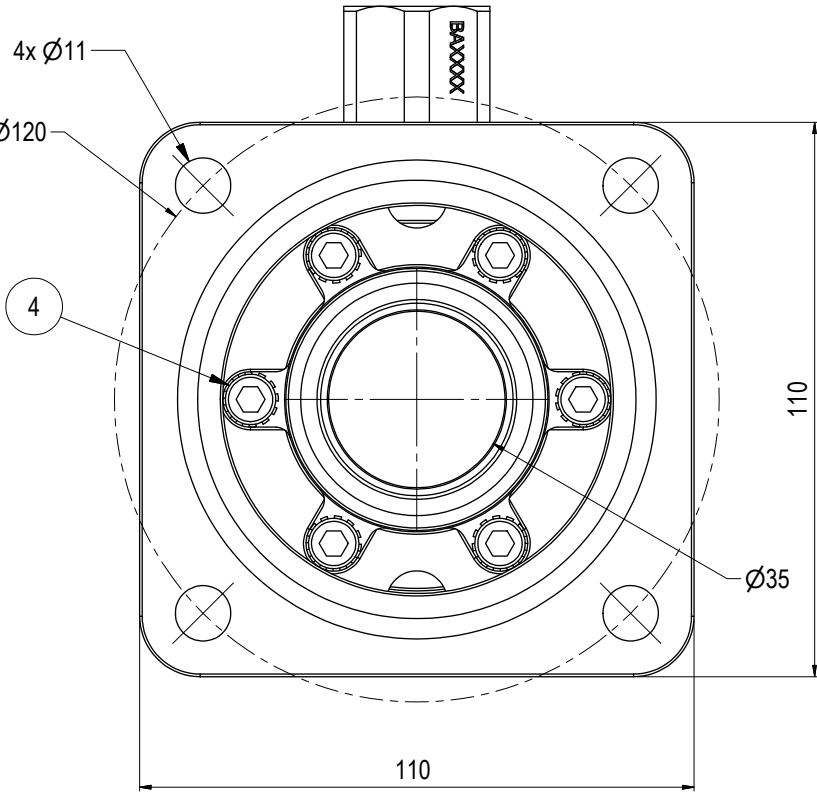


Parts List			
ITEM	QTY	PART No.	TITLE
1	1	PA0174	Ø35 DP Rec 10k Interv BSP 1/2" ID8mm
2	2	PA0088	2-Way Check Valves 10k Interv BSP 1/2" - 2,0-0,5 Bar FM-M
3	1	BA1044	Adapter Plate with Lock Interface Ø35 10k



NOTE: 1  
 DESIGN CODE:  
 API 17H/6A

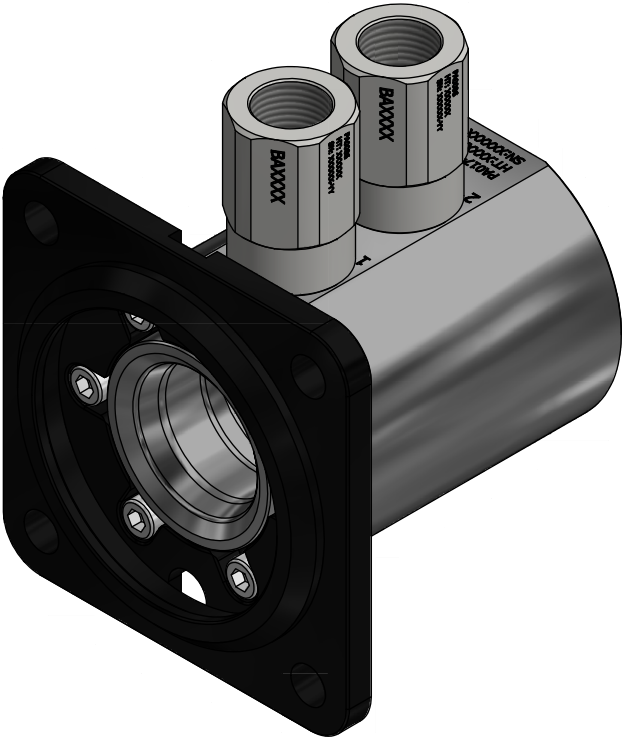
NOTE: 2  
 TECHNICAL CLASSIFICATION:  
 Article Type: 001-Hot Stabs  
 Main Group: 1.01. Ø35 Hot Stab  
 Intermediate Group: 1.1.02. Receptacle  
 Sub Group: 1.1.2.02. Dual

NOTE: 3  
 INTERFACE INFORMATION:  
 Pressure Rating Bar: 690  
 Design Water Depth: N/A  
 Material: Intervention  
 Weight: 3,5 kg  
 Volume: 0,45 dm^3  
 Submerged Weight: 3,05 kg  
 Surface Area: 1134 cm^2  
 Hydraulic: 1/2" BSP  
 Mechanical: N/A  
 Electrical: N/A  
 Com. & Protocol: N/A

NOTE: 4  
 SPAREPARTS:  
 BA5287

NOTE: 5  
 ADDITIONAL INFORMATION:  
 The Ø35mm Blue Logic Hot Stab is made according to API 17D. This Hot Stab is in general designed for flow up to approx 25 liters pr. minute. We have pressure rating up to PSI 20K or 1380 Bar. The Hot Stab system can also be fitted with an lock-system.

All Blue Logic Receptacles is Standardized with BSP Interface.  
 NPT and MP (Autoclave or Similar) Interfaces can be delivered upon request.



03	25.4.2014	9-IFU (Issued for Use)		WTJ	HNJ	WTJ
02	11.3.2013	7-IFC (Issued for Construction)		HNJ	TBA	HNJ
01	28.1.2013	7-IFC (Issued for Construction)		LAE	TBA	LAE
Rev.	Date	Reason for issue	Revision change	Made	Chk'd	Appr.



Dwg Scale: NTS	Drawing title: Ø35 DP Rec 10k Interv wCV WL BSP 1/2"	
Dwg Proj: A3		
Dwg Format: A3	Drawing number: BA3257	
		Rev. 03