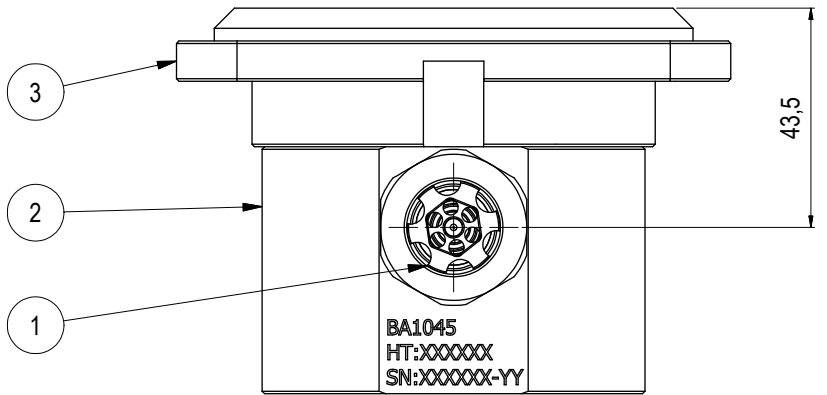
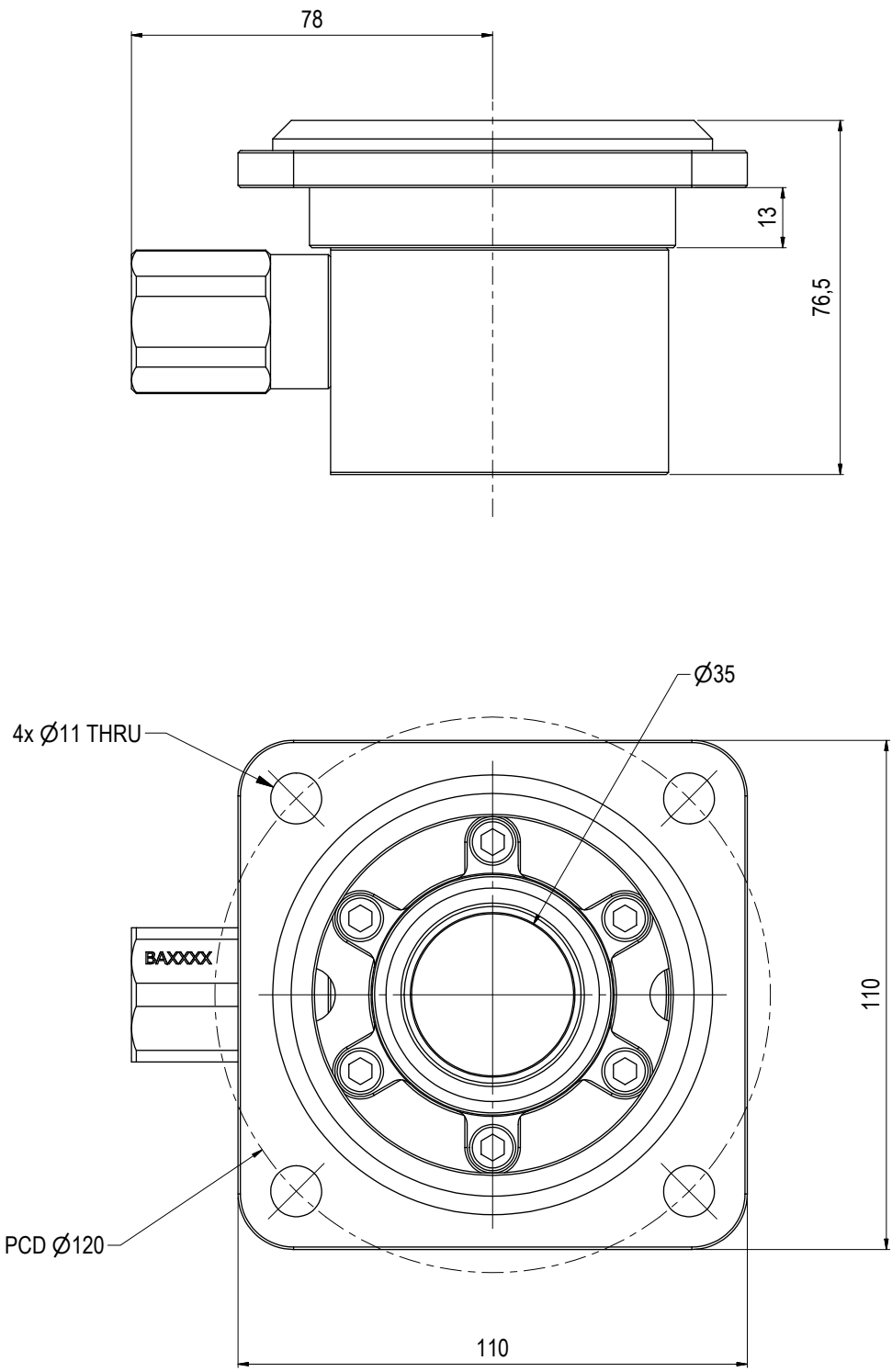


Parts List			
ITEM	QTY	PART No.	TITLE
1	1	PA0088	2-Way Check Valves 10k Interv BSP 1/2" - 2,0-0,5 Bar FM-M
2	1	BA1045	Ø35 SP Rec 10k Interv BSP 1/2"
3	1	BA1044	Adapter Plate with Lock Interface Ø35 10k



NOTE: 1
DESIGN CODE:
API 17H/6A

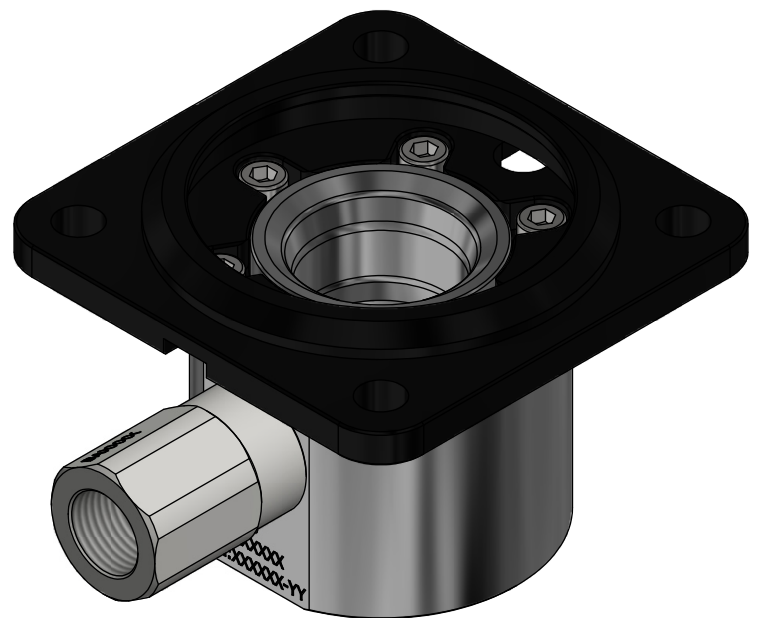
NOTE: 2
TECHNICAL CLASSIFICATION:
Article Type: 001-Hot Stabs
Main Group: 1.01. Ø35 Hot Stab
Intermediate Group: 1.1.02. Receptacle
Sub Group: 1.1.2.01. Single

NOTE: 3
INTERFACE INFORMATION:
Pressure Rating Bar: 690
Design Water Depth:
Material: Intervention
Weight in Air: 2,4 kg
Volume: 0,31 dm^3
Submerged Weight: 2,12 kg
Surface Area: 858 cm^2
Hydraulic: 1/2" BSP
Mechanical: 4x Ø11 PCD 120
Electrical: N/A
Com. & Protocol: N/A

NOTE: 4
SPAREPARTS:
BA5287

NOTE: 5
ADDITIONAL INFORMATION:
The Ø35mm Blue Logic Hot Stab is made according to API 17D. This Hot Stab is in general designed for flow up to approx 25 liters pr. minute. We have pressure rating up to PSI 20K or 1380 Bar. The Hot Stab system can also be fitted with an lock-system.

All Blue Logic Receptacles is Standardized with BSP Interface.
NPT and MP (Autoclave or Similar) Interfaces can be delivered upon request.

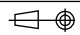


01	13.10.2020	9-IFU (Issued for Use)		LGH	HNJ	LGH
Rev.	Date	Reason for issue	Revision change	Made	Chk'd	Appr.

BLUE LOGIC



This Drawing is the Property of Blue Logic AS © and must Not be Loaned, Reproduced or Transferred to others without written Permission

Dwg Scale: NTS	Drawing title: Ø35 SP Rec 10k Interv wCV WL BSP 1/2"	Drawing number: BA1847	Rev. 01
Dwg Proj: 			
Dwg Format: A3			