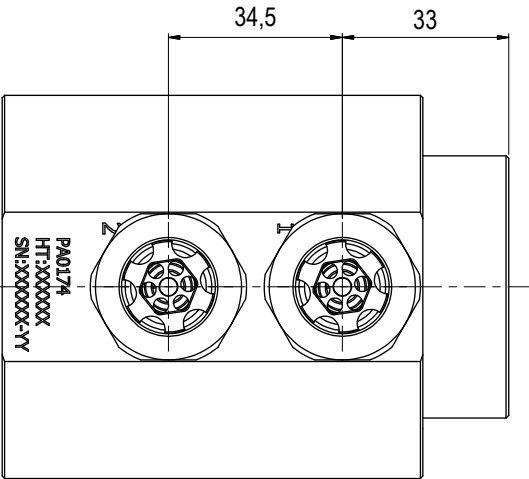
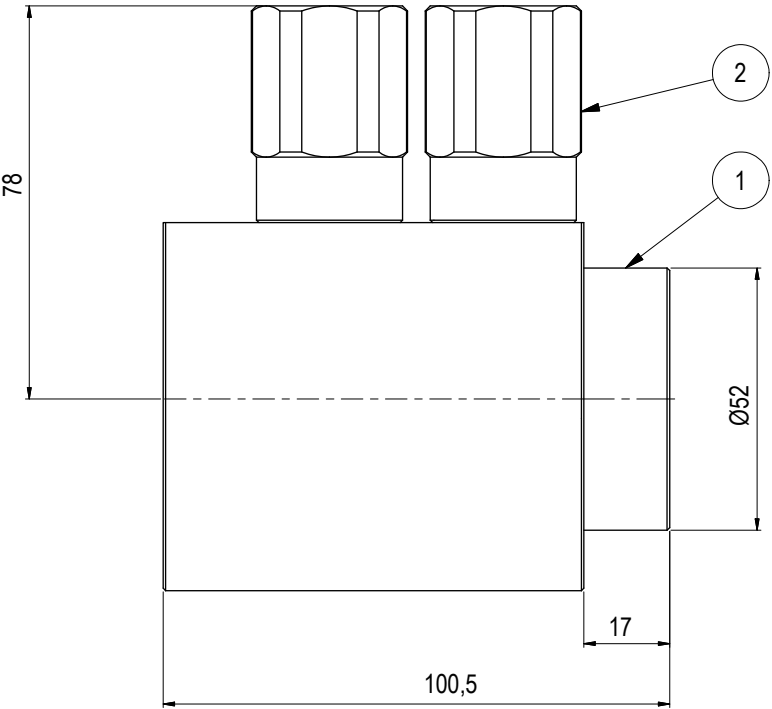
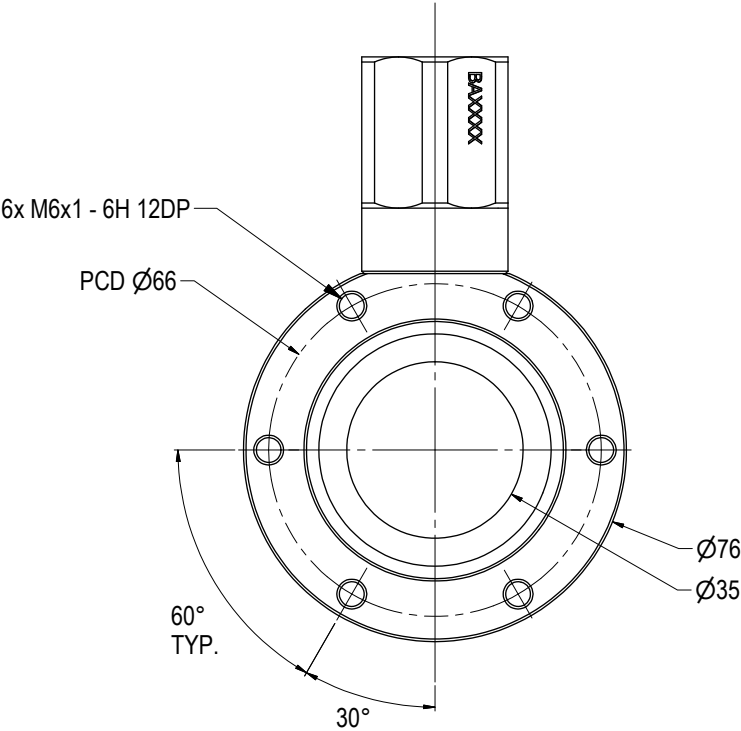


Parts List			
ITEM	QTY	PART No.	TITLE
1	1	PA0174	Ø35 DP Rec 10k Interv BSP 1/2" ID8mm
2	2	PA0088	2-Way Check Valves 10k Interv BSP 1/2" - 2,0-0,5 Bar FM-M



NOTE: 1
DESIGN CODE:
API 17H/6A

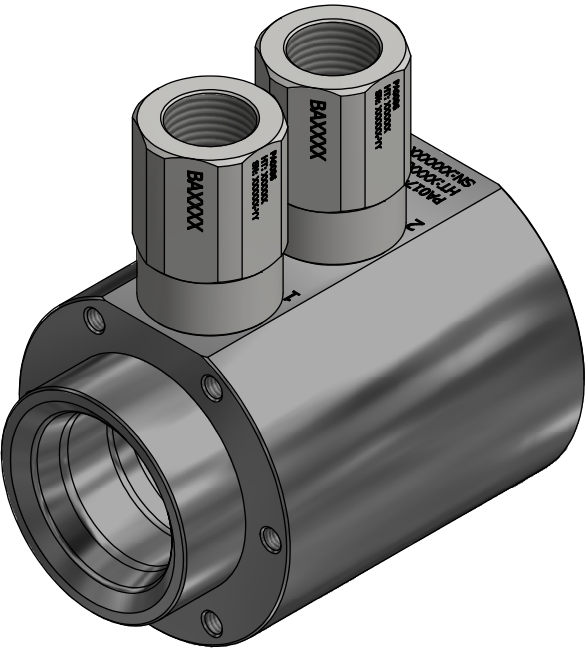
NOTE: 2
TECHNICAL CLASSIFICATION:
Article Type: 001-Hot Stabs
Main Group: 1.01. Ø35 Hot Stab
Intermediate Group: 1.1.02. Receptacle
Sub Group: 1.1.2.02. Dual

NOTE: 3
INTERFACE INFORMATION:
Pressure Rating Bar: 690
Design Water Depth: N/A
Material: Intervention
Weight: 2,7 kg
Volume: 0,34 dm^3
Submerged Weight: 2,32 kg
Surface Area: 727 cm^2
Hydraulic: BSP 1/2"
Mechanical: 6xM6@PCD 66
Electrical: N/A
Com. & Protocol: N/A

NOTE: 4
SPAREPARTS:
BA5287

NOTE: 5
ADDITIONAL INFORMATION:
The Ø35mm Blue Logic Hot Stab is made according to API 17D. This Hot Stab is in general designed for flow up to approx 25 liters pr. munute. We have pressure rating up to PSI 20K or 1380 Bar. The Hot Stab system can also be fitted with an lock-system.

All Blue Logic Receptacles is Standardized with BSP Interface.
NPT and MP (Autoclave or Similar) Interfaces can be delivered upon request.



04	25.4.2014	9-IFU (Issued for Use)		WTJ	HNJ	WTJ
03	6.5.2013	7-IFC (Issued for Construction)		LAE	HNJ	LAE
02	22.2.2012	Issued for Information		LGH	NA	NA
01	3.10.2011	Issued for Information		LGH	EKJ	LGH
Rev.	Date	Reason for issue	Revision change	Made	Chk'd	Appr.



Dwg Scale: NTS	Drawing title: Ø35 DP Rec 10k Interv wCV BSP 1/2" ID8mm	
Dwg Proj: A3		
Dwg Format: A3	Drawing number: BA1043	
		Rev. 04