

NOTE: 1

DESIGN CODE:

N/A

NOTE: 2

TECHNICAL CLASSIFICATION:

Article Type: 006-El. Connectors

Main Group: 6.01. Subsea USB

Intermediate Group: 6.28.01. 0-60W Subsea USB

Sub Group: 6.28.95.02. Female Connector

NOTE: 3

INTERFACE INFORMATION:

Pressure Rating Bar: N/A

Design Water Depth: 3000

Material: Intervention

Weight: 1,9 kg

Volume: 0,76 dm<sup>3</sup>

Submerged Weight: 1,11 kg

Surface Area: 3198 cm<sup>2</sup>

Hydraulic: N/A

Mechanical: N/A

Electrical: Subconn DBCR2013M Ethernet Cable

Com. & Protocol: Ethernet 80Mbps/RS232/485 230kbps

NOTE: 4

OPERATION & MAINTENANCE INFORMATION:

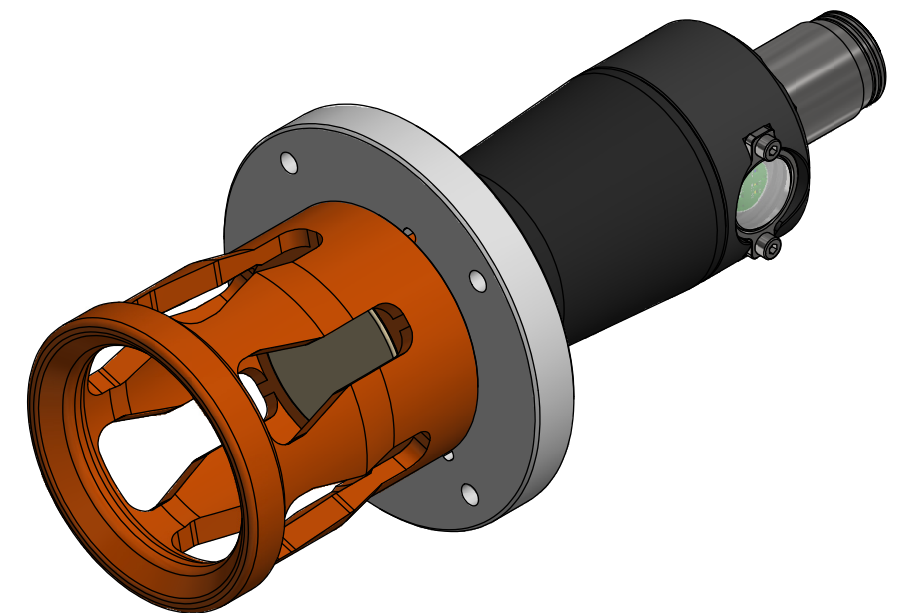
600128-TD-0020

NOTE: 5

ADDITIONAL INFORMATION:

Inductive Subsea Connector for transfer of electrical power and communication. The Blue Logic inductive connector is a multipurpose electrical connector with the capacity of transferring up to 50W electrical power, 80Mbps Ethernet and 230kbps serial communication on RS232 or RS485.

BB2306 is a female connector with flange interface, configured to be the primary side (supply part) in a connector system. Designed for short-term (intervention) subsea service down to 3000m water depth.



08	22.8.2023	9-IFU (Issued for Use)		WTJ	LGH	WTJ
07	1.12.2022	9-IFU (Issued for Use)		WTJ	LGH	WTJ
06	28.1.2021	9-IFU (Issued for Use)		WTJ	LGH	WTJ
05	21.1.2020	9-IFU (Issued for Use)		WTJ	LGH	WTJ
Rev.	Date	Reason for issue	Revision change	Made	Chk'd	Appr.

**BLUE LOGIC**

This Drawing is the Property of Blue Logic AS © and must Not be Loaned, Reproduced or Transferred to others without written Permission

Dwg Scale:  
NTS  
Dwg Proj:  
Dwg Format:  
A3

Drawing title:  
USB-A 50W Female Flange Mount Inductive Connector Interv

Drawing number:  
BB2306

Rev.  
08