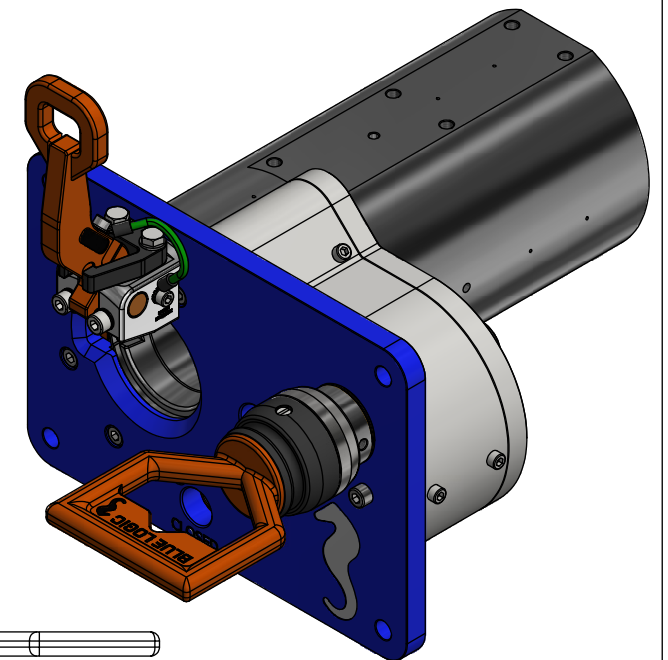
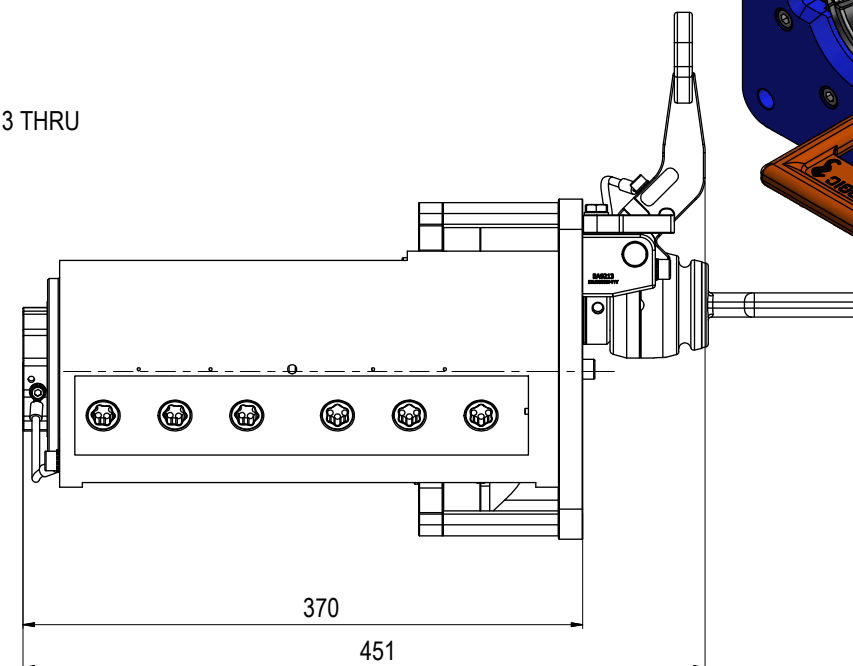
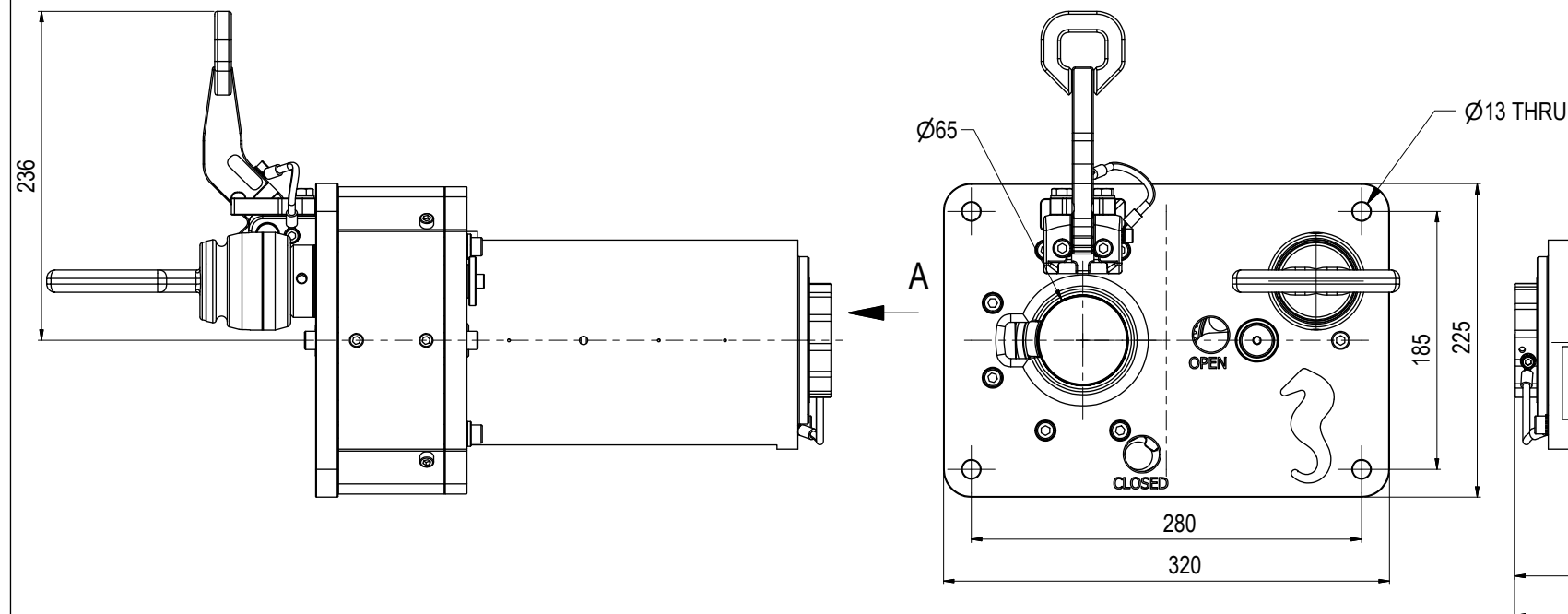


VIEW A



NOTE: 1  
DESIGN CODE:  
API 6A

NOTE: 2  
TECHNICAL CLASSIFICATION:  
Article Type: 003-Valve Stabs  
Main Group: 3.08. Ø63/Ø65-Valvestab  
Intermediate Group: 3.88.02 Receptacle  
Sub Group: 3.88.419.05. Hexa

NOTE: 3  
INTERFACE INFORMATION:  
Pressure Rating Bar: 1035  
Design Water Depth: N/A  
Material: Long-term  
Weight: 57,9 kg  
Volume: 7,51 dm<sup>3</sup>  
Submerged Weight: 50,24 kg  
Surface Area: 13426 cm<sup>2</sup>  
Hydraulic: 6x 3/8" MP  
Mechanical: N/A  
Electrical: N/A  
Com. & Protocol: N/A

08	12.1.2024	9-IFU (Issued for Use)		WTJ	LGH	WTJ
07	5.11.2021	9-IFU (Issued for Use)		WTJ	LGH	TAN
06	5.8.2021	7-IFC (Issued for Construction)		HNJ	LGH	HNJ
05	27.5.2021	7-IFC (Issued for Construction)		WTJ	LGH	WTJ
Rev.	Date	Reason for issue	Revision change	Made	Chk'd	Appr.



Dwg Scale:	NTS
Dwg Proj:	
Dwg Format:	A3

Drawing title:	Ø63/Ø65 HP VStab Rec 15k Long-term MP 3/8" wLock and Handle
Drawing number:	BB2916
Rev.	08